

PLENUM FANS



OVERVIEW



Model EPFN
Air Handling Unit



Model MPQN
Air Handling Unit



Model EPF
Air Handling Unit



Model MPQN
Air Handling Unit

PLENUM FANS

Plenum Fans are designed for general HVAC applications where large volumes of clean air are required at low to moderate pressures. Backward inclined airfoil wheels provide high efficiency, performance and sound characteristics needed for the most stringent HVAC applications. Housed or open designs as well as belt or direct drive, plenum fans provide the flexibility to match the performance and application at the highest efficiency.

APPLICATIONS

Air-Conditioning/Heating Units, Air-Make-Up Units, Clean-Room Filtration Systems, Supply Air Systems

WHEEL TYPES

Backward inclined airfoil (9-blade or 12-blade)

TYPICAL INDUSTRIES

General HVAC (exhaust, filtration, return and supply, air of commercial buildings and air handling units)

COMMON ACCESSORIES

Inlet/Outlet Screen, Piezometer Ring Airflow Measurement System, Pressure Transducers, Protective Enclosure, Special Coatings, Vibration Isolation, Aero Acoustic Diffuser™

OPTIONAL CONSTRUCTION

Special Wheel Width

CERTIFICATIONS

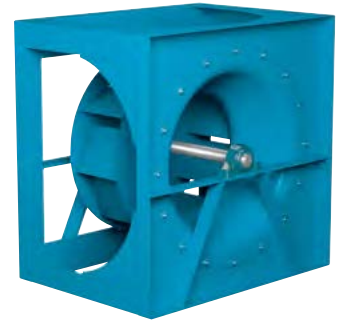
AMCA Sound/Air and FEG



EPF

PLENUM FAN, AIRFOIL WHEEL, 9-BLADES, ARRANGEMENT 3

- > 12.4 to 89 inches (315 mm to 2,265 mm) wheel diameters
- > Airflow to 280,000 CFM (475,700 m³/hour)
- > Static pressure to 10 inches w.g. (2,490 Pa)
- > AMCA licensed for Sound, Air and Fan Efficiency Grade

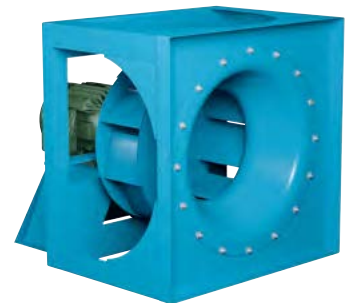


 CATALOG 470

EPFN

PLENUM FAN, AIRFOIL WHEEL, 9-BLADES, ARRANGEMENT 1 & 4

- > 12.4 to 89 inches (315 mm to 2,265 mm) wheel diameters
- > Airflow to 280,000 CFM (475,700 m³/hour)
- > Static pressure to 10 inches w.g. (2,490 Pa)
- > AMCA licensed for Sound, Air and Fan Efficiency Grade

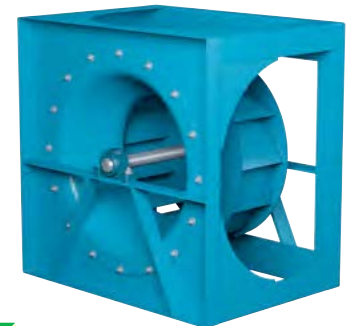


 CATALOG 470

EPQ

PLENUM FAN, AIRFOIL WHEEL, 12-BLADES, ARRANGEMENT 3

- > 12.4 to 89 inches (315 mm to 2,265 mm) wheel diameters
- > Airflow to 280,000 CFM (475,700 m³/hour)
- > Static pressure to 12 inches w.g. (2,980 Pa)
- > AMCA licensed for Sound, Air and Fan Efficiency Grade

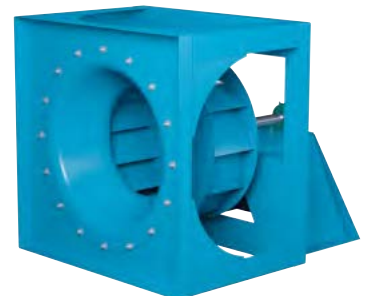


 CATALOG 470

EPQN

PLENUM FAN, AIRFOIL WHEEL, 12-BLADES, ARRANGEMENT 1 & 4

- > 12.4 to 89 inches (315 mm to 2,265 mm) wheel diameters
- > Airflow to 280,000 CFM (475,700 m³/hour)
- > Static pressure to 12 inches w.g. (2,980 Pa)
- > AMCA licensed for Sound, Air and Fan Efficiency Grade



 CATALOG 470



EPLFN

PLENUM FAN, COMMERCIAL DUTY, AIRFOIL WHEEL, 9-BLADED

- > 12.25 to 49 inches (310 mm to 1,245 mm) wheel diameters
- > Airflow to 68,800 CFM (116,900 m³/hour)
- > Static pressure to 12 inches w.g. (2,980 Pa)
- > AMCA licensed for Sound, Air and Fan Efficiency Grade

CATALOG 455



EPLQN

PLENUM FAN, COMMERCIAL DUTY, AIRFOIL WHEEL, 12-BLADED

- > 12.4 to 49 inches (315 mm to 1,245 mm) wheel diameters
- > Airflow to 68,800 CFM (116,900 m³/hour)
- > Static pressure to 12 inches w.g. (2,980 Pa)
- > AMCA licensed for Sound, Air and Fan Efficiency Grade

CATALOG 455



MPQN

MODULAR INSULATED PLENUM FAN, AIRFOIL WHEEL, 12-BLADED, ARRANGEMENT 4

- > 12.4 to 49 inches (315 mm to 1,245 mm) wheel diameters
- > Airflow to 76,000 CFM (129,100 m³/hour)
- > Static pressure to 12 inches w.g. (2,980 Pa)
- > AMCA licensed for Sound, Air and Fan Efficiency Grade

CATALOG 490



MPQS

MODULAR PLENUM FAN, AIRFOIL WHEEL, 12-BLADED, ARRANGEMENT 4

- > 12.4 to 49 inches (315 mm to 1,245 mm) wheel diameters
- > Airflow to 76,000 CFM (129,100 m³/hour)
- > Static pressure to 12 inches w.g. (2,980 Pa)
- > AMCA licensed for Sound, Air and Fan Efficiency Grade

CATALOG 490



MPLFS

MODULAR PLENUM FAN, AIRFOIL WHEEL
9-BLADED, ARRANGEMENT 4

- > 12.25 to 36.5 inches (315 mm to 930 mm) wheel diameters
- > Airflow to 44,000 CFM (74,800 m³/hour)
- > Static pressure to 12 inches w.g. (2,980 Pa)
- > AMCA licensed for Sound, Air and Fan Efficiency Grade

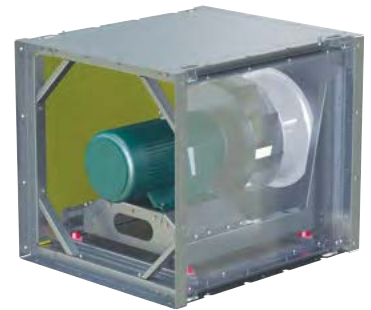


 CATALOG 495

MPLFN

MODULAR INSULATED PLENUM FAN, AIRFOIL WHEEL
9-BLADED, ARRANGEMENT 4

- > 12.25 to 36.5 inches (315 mm to 930 mm) wheel diameters
- > Airflow to 44,000 CFM (74,800 m³/hour)
- > Static pressure to 12 inches w.g. (2,980 Pa)
- > AMCA licensed for Sound, Air and Fan Efficiency Grade



 CATALOG 495

MPLQS

MODULAR PLENUM FAN, AIRFOIL WHEEL
12-BLADED, ARRANGEMENT 4

- > 12.25 to 36.5 inches (315 mm to 930 mm) wheel diameters
- > Airflow to 44,000 CFM (74,800 m³/hour)
- > Static pressure to 12 inches w.g. (2,980 Pa)
- > AMCA licensed for Sound, Air and Fan Efficiency Grade

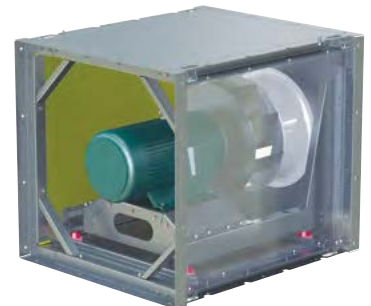


 CATALOG 495

MPLQN

MODULAR INSULATED PLENUM FAN, AIRFOIL WHEEL
12-BLADED, ARRANGEMENT 4

- > 12.25 to 36.5 inches (315 mm to 930 mm) wheel diameters
- > Airflow to 44,000 CFM (74,800 m³/hour)
- > Static pressure to 12 inches w.g. (2,980 Pa)
- > AMCA licensed for Sound, Air and Fan Efficiency Grade



 CATALOG 495

SALES CONTACT



www.airmax-hvac.com



080-614-4944, 063-268-8080



@airmax (Line Official)



windcontrol.info@gmail.com



Address

เลขที่ 56/392 หมู่ที่ 12
ตำบลศีรษะจรเข้น้อย
อำเภอบางเสาธง
จังหวัดสมุทรปราการ
10540

