

- Air damper size up to approx. 0.2 m²
- Torque motor 1 Nm
- Nominal voltage AC 100...240 V
- Control Open/close, 3-point
- Mechanical interface Form fit 8x8 mm
- with plug


Technical data

| | | |
|------------------------|--|--|
| Electrical data | Nominal voltage | AC 100...240 V |
| | Nominal voltage frequency | 50/60 Hz |
| | Nominal voltage range | AC 85...265 V |
| | Power consumption in operation | 2 W |
| | Power consumption in rest position | 1.5 W |
| | Power consumption for wire sizing | 4.5 VA |
| | Connection supply / control | Connector plug (Cable-side connector socket not included in scope of delivery) |
| | Connection plug | Molex Mini-Fit Jr. 39303035 |
| Functional data | Parallel operation | Yes (note the performance data) |
| | Torque motor | 1 Nm |
| | Direction of motion motor | counter-clockwise rotation |
| | Manual override | No |
| | Angle of rotation | 0...287.5° |
| | Angle of rotation note | can be limited by adjustable mechanical end stop 315° with one end stop clip mounted on the actuator Without limitation: endless |
| | Running time motor | 22 s / 90° |
| | Sound power level, motor | 35 dB(A) |
| | Mechanical interface | Form fit 8x8 mm |
| | Position indication | No |
| Safety data | Protection class IEC/EN | 0, basic insulation |
| | Power source UL | Class 2 Supply |
| | Degree of protection IEC/EN | IP20 |
| | Degree of protection NEMA/UL | NEMA 1 |
| | Enclosure | UL Enclosure Type 1 |
| | EMC | CE according to 2014/30/EU |
| | Low voltage directive | CE according to 2014/35/EU |
| | Certification IEC/EN | IEC/EN 60730-1 and IEC/EN 60730-2-14 |
| | UL Approval | cURus according to UL60730-1A, UL60730-2-14 and CAN/CSA E60730-1 |
| | Mode of operation | Type 1 |
| | Rated impulse voltage supply / control | 2.5 kV |
| | Pollution degree | 2 |
| | Ambient humidity | Max. 95% RH, non-condensing |
| | Ambient temperature | -30...50°C [-22...122°F] |
| | Storage temperature | -40...80°C [-40...176°F] |
| | Servicing | maintenance-free |

Weight Weight 0.09 kg

Safety notes



- This device has been designed for use in stationary heating, ventilation and air-conditioning systems and must not be used outside the specified field of application, especially in aircraft or in any other airborne means of transport.
- The device is not designed for applications where chemical influences (gases, fluids) are present or for utilisation in corrosive environments in general.
- The device is considered a component and intended for installation in an equipment at the factory. The required protection against accidental contact with live parts must be provided by the damper or system manufacturer.
- Caution: Power supply voltage!
- Only authorised specialists may carry out installation. All applicable legal or institutional installation regulations must be complied during installation.
- The device may only be opened at the manufacturer's site. It does not contain any parts that can be replaced or repaired by the user.
- The plug connections may only be used according to the installation instructions. The Molex plug connection has a mandatory locking mechanism that prevents unintentional disconnection. Operating the locking mechanism and the entire plug connection under voltage is not permitted.
- To calculate the torque required, the specifications supplied by the damper manufacturers concerning the cross-section, the design, the installation situation and the ventilation conditions must be observed.
- The device contains electrical and electronic components and must not be disposed of as household refuse. All locally valid regulations and requirements must be observed.

Product features

| | |
|---------------------------------------|---|
| Simple direct mounting | The actuator is mounted directly on the damper shaft (Ø 6...12.7 mm) with a universal shaft clamp and then secured with the anti-rotation clip, to prevent it from rotating. The anti-rotation clip Z-ARCM is not included in the scope of delivery. |
| Adjustable angle of rotation | Adjustable angle of rotation with mechanical end stops. |
| High functional reliability | The actuator is overload protected, requires no limit switches and automatically stops when the end stop is reached. |
| Restriction 3-point controller | - For applications with 3-point open-loop control, a minimum pulse length of 1 sec. is recommended to increase position accuracy. - For applications with 3-point closed-loop control, a pulse length of 0.5 sec. is possible to reduce oscillation. |
| Delivery notes | Incl. End stop clip |

Accessories

| Mechanical accessories | Description | Type |
|------------------------|--|--------|
| | Anti-rotation clip, Multipack 20 pcs. | Z-ARCM |
| | End stop clip, Multipack 20 pcs. | Z-ESCM |
| | Protective covering, Multipack 20 pcs. | Z-PCUM |

Electrical installation


Supply from isolating transformer.

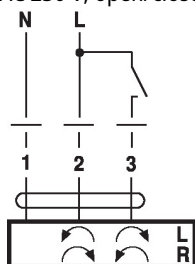
Parallel connection of other actuators possible. Observe the performance data.

Cable-side connector socket is not included in scope of delivery

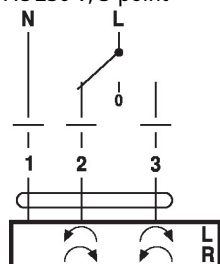
The plug connections may only be used according to the installation instructions. The Molex plug connection has a mandatory locking mechanism that prevents unintentional disconnection. Operating the locking mechanism and the entire plug connection under voltage is not permitted.

Wiring diagrams

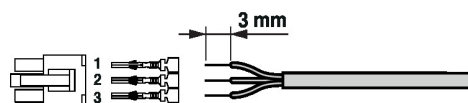
AC 230 V, open/close



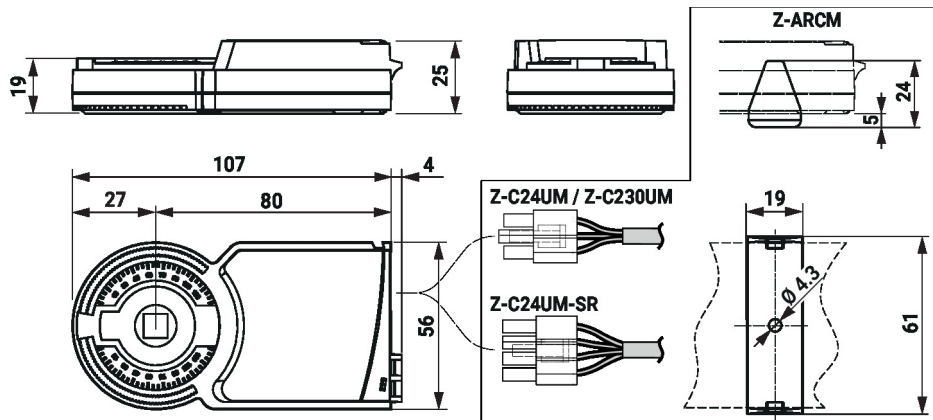
AC 230 V, 3-point

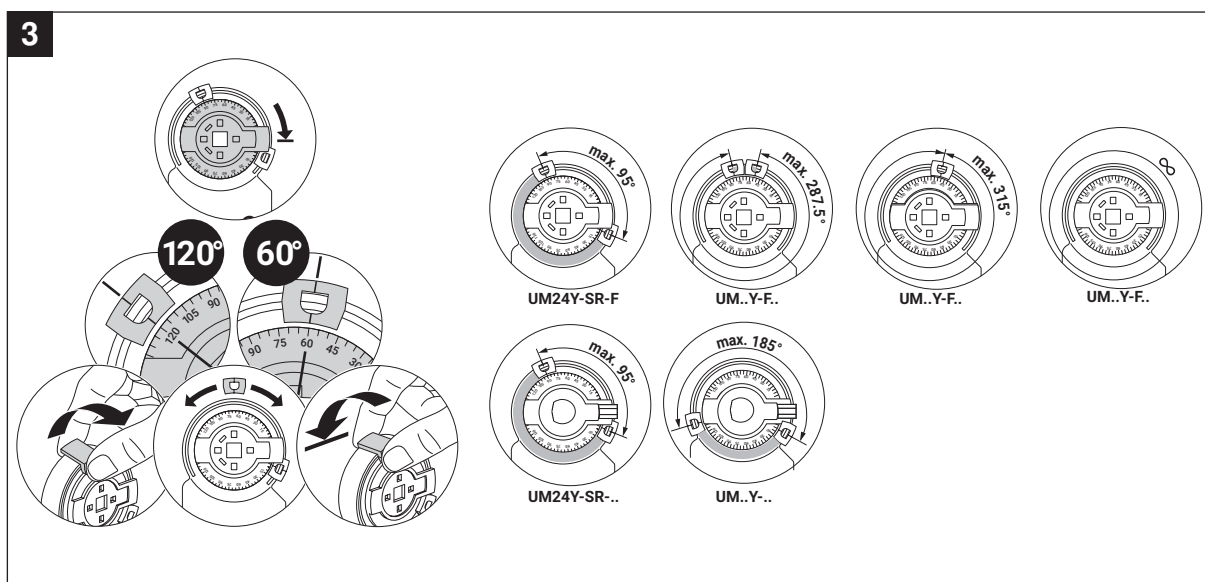
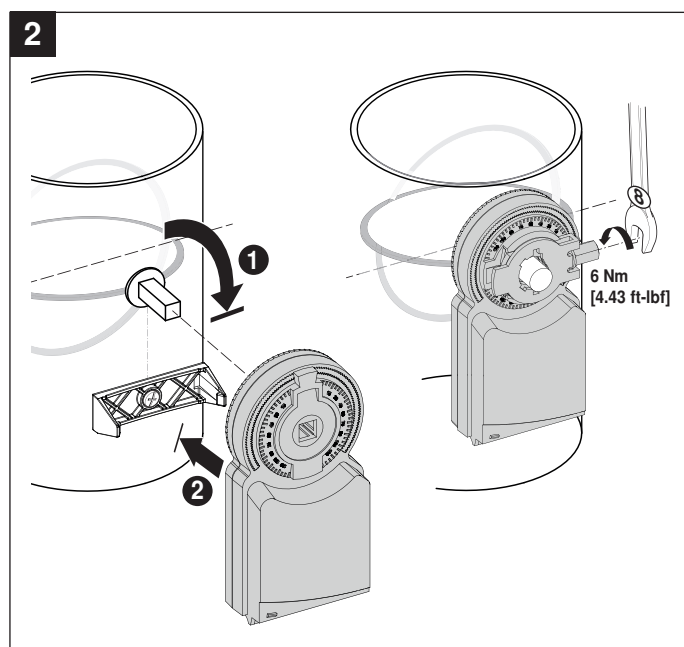
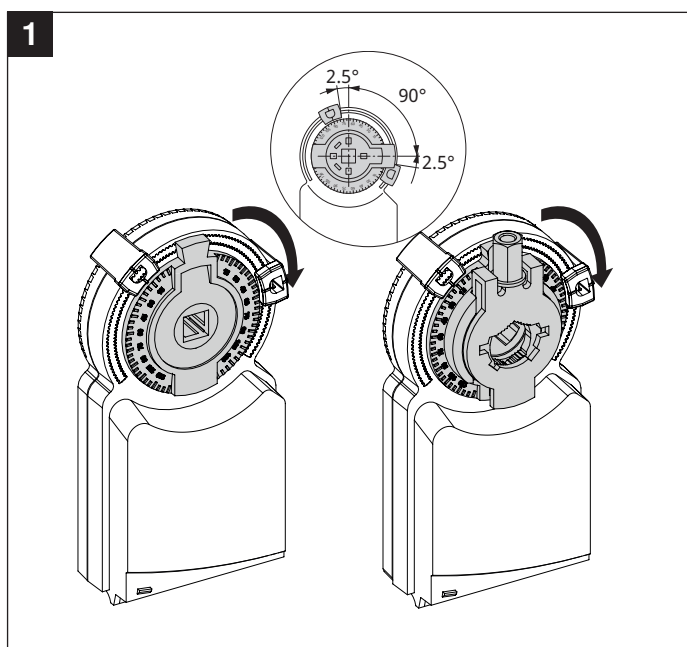
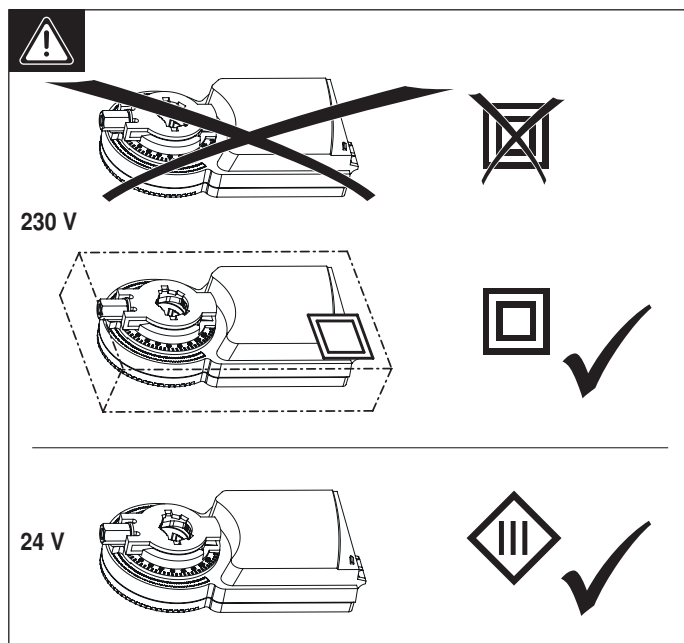
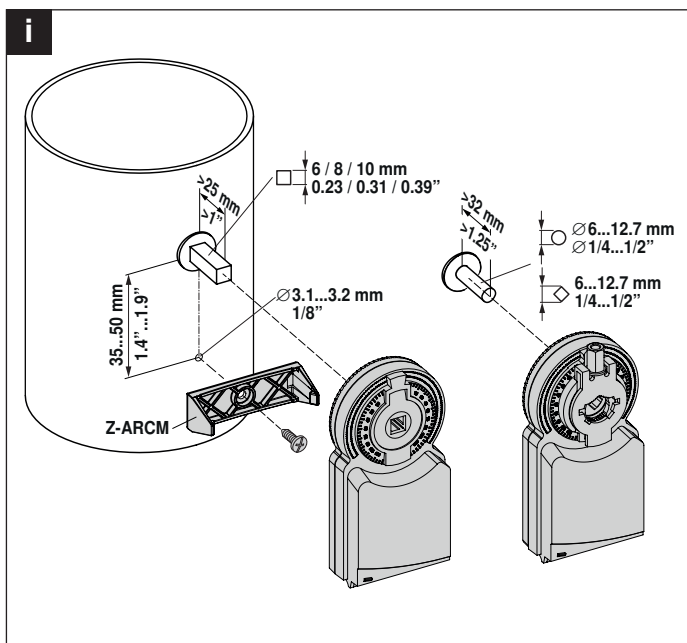


Molex PN 39014030 / 39000039 (0.5...1.0 mm²)

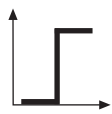
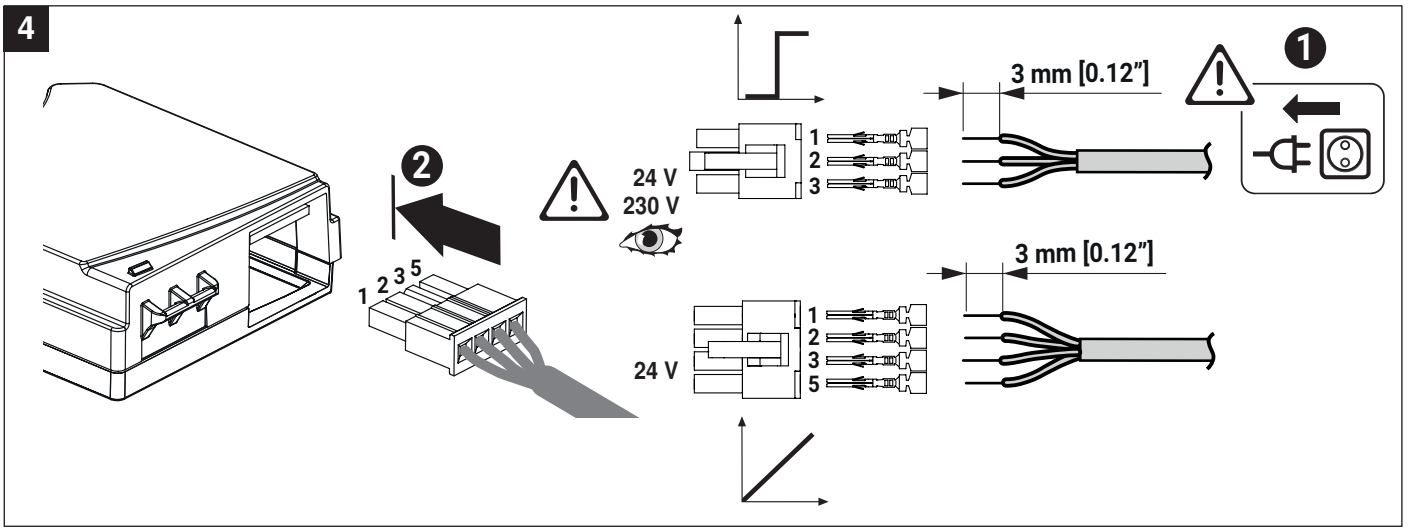

Dimensions
Spindle length

| | |
|--|---------|
| | Min. 25 |
| | - |

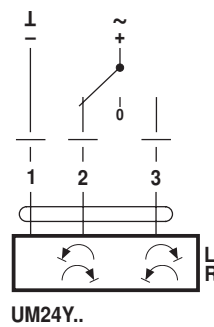
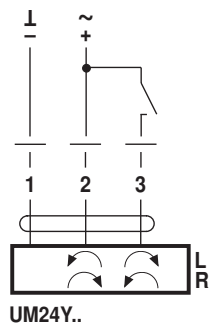




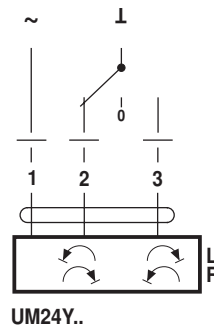
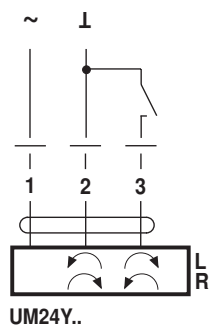
4



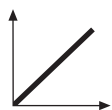
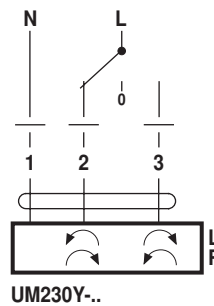
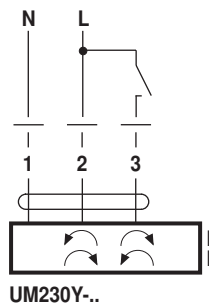
AC 24 V / DC 24 V



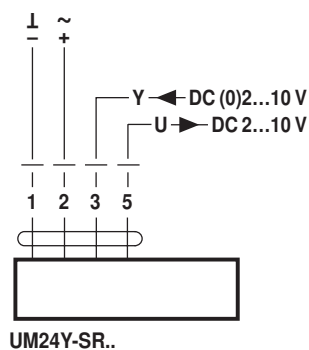
AC 24 V



AC 100...240 V



AC 24 V / DC 24 V



SALES CONTACT



www.airmax-hvac.com



080-614-4944, 063-268-8080



@airmax (Line Official)



windcontrol.info@gmail.com



Address

เลขที่ 56/392 หมู่ที่ 12
ตำบลศีรษะจรเข้น้อย
อำเภอบางเสาธง
จังหวัดสมุทรปราการ
10540

