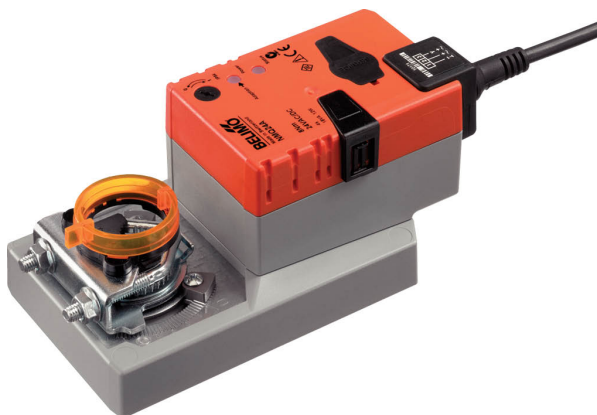


- Air damper size up to approx. 1.5 m²
- Torque motor 8 Nm
- Nominal voltage AC/DC 24 V
- Control Open/close (unsuitable for 3-point controls)
- Running time motor 4 s



Technical data

| | | |
|------------------------|--|---|
| Electrical data | Nominal voltage | AC/DC 24 V |
| | Nominal voltage frequency | 50/60 Hz |
| | Nominal voltage range | AC 19.2...28.8 V / DC 21.6...28.8 V |
| | Power consumption in operation | 13 W |
| | Power consumption in rest position | 2 W |
| | Power consumption for wire sizing | 23 VA |
| | Power consumption for wire sizing note | I _{max} 20 A @ 5 ms |
| | Connection supply / control | Cable 1 m, 3 x 0.75 mm ² |
| | Parallel operation | Yes (note the performance data) |
| Functional data | Torque motor | 8 Nm |
| | Direction of motion motor | selectable with switch 0 (ccw rotation) / 1 (cw rotation) |
| | Manual override | with push-button, can be locked |
| | Angle of rotation | Max. 95° |
| | Angle of rotation note | can be limited on both sides with adjustable mechanical end stops |
| | Minimum angle of rotation | Min. 30° |
| | Running time motor | 4 s / 90° |
| | Sound power level, motor | 56 dB(A) |
| | Mechanical interface | Universal shaft clamp 8...26.7 mm |
| Safety data | Position indication | Mechanical, pluggable |
| | Protection class IEC/EN | III, Safety Extra-Low Voltage (SELV) |
| | Power source UL | Class 2 Supply |
| | Degree of protection IEC/EN | IP54 |
| | Degree of protection NEMA/UL | NEMA 2 |
| | Enclosure | UL Enclosure Type 2 |
| | EMC | CE according to 2014/30/EU |
| | Certification IEC/EN | IEC/EN 60730-1 and IEC/EN 60730-2-14 |
| | UL Approval | cULus according to UL60730-1A, UL60730-2-14 and CAN/CSA E60730-1 The UL marking on the actuator depends on the production site, the device is UL-compliant in any case |
| | Type of action | Type 1 |
| | Rated impulse voltage supply / control | 0.8 kV |
| | Pollution degree | 3 |
| | Ambient humidity | Max. 95% RH, non-condensing |
| | Ambient temperature | -30...40°C [-22...104°F] |

| | | |
|-------------|--------------------------|--|
| Safety data | Ambient temperature note | Caution: +40...+50°C utilisation possible only under certain restrictions. Please contact your supplier. |
| | Storage temperature | -40...80°C [-40...176°F] |
| | Servicing | maintenance-free |
| Weight | Weight | 1.0 kg |

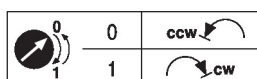
Safety notes



- This device has been designed for use in stationary heating, ventilation and air-conditioning systems and must not be used outside the specified field of application, especially in aircraft or in any other airborne means of transport.
- Outdoor application: only possible in case that no (sea) water, snow, ice, insolation or aggressive gases interfere directly with the device and that it is ensured that the ambient conditions remain within the thresholds according to the data sheet at any time.
- Only authorised specialists may carry out installation. All applicable legal or institutional installation regulations must be complied during installation.
- The device may only be opened at the manufacturer's site. It does not contain any parts that can be replaced or repaired by the user.
- Cables must not be removed from the device.
- Self adaptation is necessary when the system is commissioned and after each adjustment of the angle of rotation (press the adaptation push-button once).
- To calculate the torque required, the specifications supplied by the damper manufacturers concerning the cross-section, the design, the installation situation and the ventilation conditions must be observed.
- The device contains electrical and electronic components and must not be disposed of as household refuse. All locally valid regulations and requirements must be observed.

Product features

| | |
|-------------------------------------|---|
| Simple direct mounting | Simple direct mounting on the damper shaft with a universal shaft clamp, supplied with an anti-rotation device to prevent the actuator from rotating. |
| Manual override | Manual override with push-button possible (the gear train is disengaged for as long as the button is pressed or remains locked). |
| Adjustable angle of rotation | Adjustable angle of rotation with mechanical end stops. A minimum permissible angle of rotation of 30° must be allowed for. |
| High functional reliability | The actuator is overload protected, requires no limit switches and automatically stops when the end stop is reached. |
| Home position | <p>The first time the supply voltage is switched on, i.e. at the time of commissioning, the actuator carries out an adaptation, which is when the operating range and position feedback adjust themselves to the mechanical setting range.</p> <p>The detection of the mechanical end stops enables a gentle approach to the end positions, thus protecting the actuator mechanics.</p> <p>The actuator then moves into the position defined by the control signal.</p> |



Accessories

| Electrical accessories | Description | Type |
|------------------------|---|----------|
| | Auxiliary switch 1 x SPDT add-on | S1A |
| | Auxiliary switch 2 x SPDT add-on | S2A |
| | Feedback potentiometer 140 Ω add-on | P140A |
| | Feedback potentiometer 200 Ω add-on | P200A |
| | Feedback potentiometer 500 Ω add-on | P500A |
| | Feedback potentiometer 1 kΩ add-on | P1000A |
| | Feedback potentiometer 2.8 kΩ add-on | P2800A |
| | Feedback potentiometer 5 kΩ add-on | P5000A |
| | Feedback potentiometer 10 kΩ add-on | P10000A |
| | Adapter for auxiliary switch and feedback potentiometer | Z-SPA |
| Mechanical accessories | Description | Type |
| | Actuator arm for standard shaft clamp (one-sided) | AH-25 |
| | Shaft extension 240 mm Ø20 mm for damper shaft Ø 8...22.7 mm | AV8-25 |
| | Shaft clamp one-sided, clamping range Ø8...26 mm, Multipack 20 pcs. | K-ENSA |
| | Shaft clamp reversible, clamping range Ø10...20 mm | K-SA |
| | Anti-rotation mechanism 180 mm, Multipack 20 pcs. | Z-ARS180 |
| | Form fit insert 10x10 mm, Multipack 20 pcs. | ZF10-NSA |
| | Form fit insert 12x12 mm, Multipack 20 pcs. | ZF12-NSA |
| | Form fit insert 15x15 mm, Multipack 20 pcs. | ZF15-NSA |
| | Form fit insert 16x16 mm, Multipack 20 pcs. | ZF16-NSA |
| | Position indicator, Multipack 20 pcs. | Z-PI |
| | Shaft clamp one-sided, clamping range Ø8...26 mm with insert, Multipack 20 pcs. | K-ENMA |
| | Mounting kit for linkage operation for flat installation | ZG-NMA |
| | * Adapter Z-SPA | |
| | It is imperative that this adapter will be ordered if an auxiliary switch or a feedback potentiometer is required and if at the same time the shaft clamp is installed on the rear side of the actuator (e.g. with short shaft installation). | |

Electrical installation


Supply from isolating transformer.

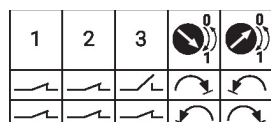
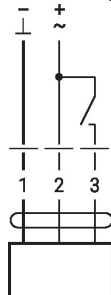
Parallel connection of other actuators possible. Observe the performance data.

Wire colours:

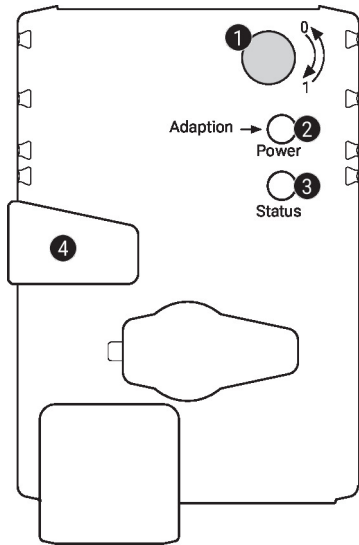
- 1 = black
- 2 = red
- 3 = white

Wiring diagrams

AC/DC 24 V, open/close



Operating controls and indicators



1 Direction of rotation switch

Switch over: Direction of rotation changes

2 Push-button and LED display green

Off: No power supply or malfunction
On: In operation
Press button: Triggers angle of rotation adaptation, followed by standard mode

3 Push-button and LED display yellow

Off: Standard mode
On: Adaptation or synchronisation process active
Press button: No function

4 Manual override button

Press button: Gear train disengages, motor stops, manual override possible
Release button: Gear train engages, synchronisation starts, followed by standard mode

Check power supply connection

2 Off and 3 On Possible wiring error in power supply

Installation notes

Negative torque Max. 50% of the torque (Caution: Application possible only with restrictions. Please contact your supplier.)

Dimensions

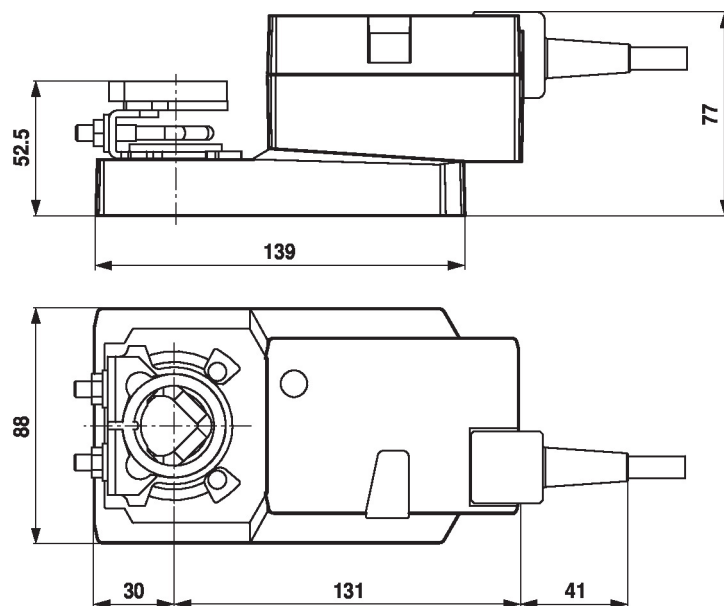
Spindle length

| | |
|--|---------|
| | Min. 42 |
| | Min. 20 |

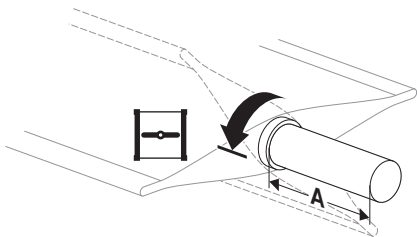
Clamping range




| | 8...26.7 | ≥8 | ≤26.7 |
|--|----------|----|-------|
| | 8...20 | ≥8 | ≤20 |

*Option: Shaft clamp mounted below (accessory K-SA needed) *Option: Shaft clamp mounted below: If an auxiliary switch or a feedback potentiometer is used the adapter Z-SPA is required.

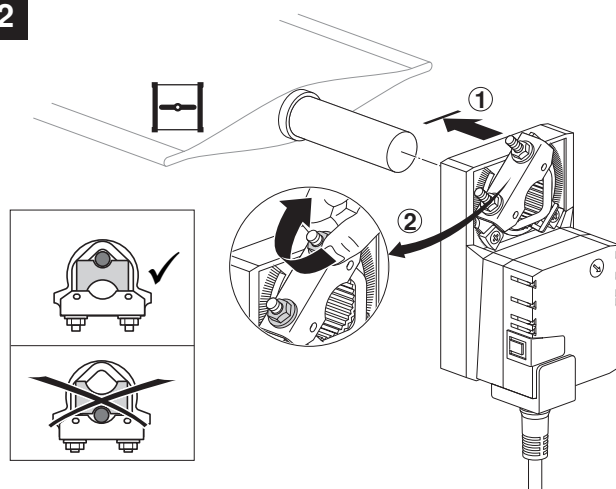


1

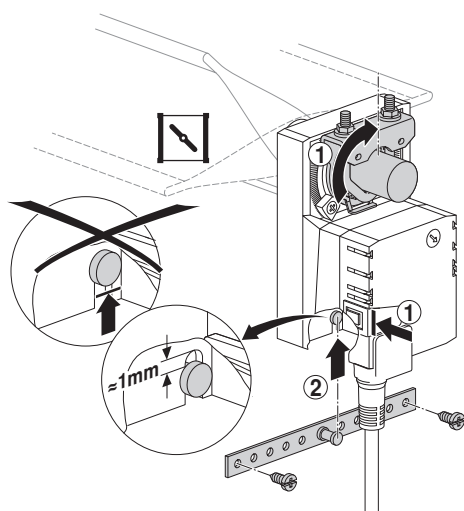


| | A |  |  |  |
|----------|------|---|---|---|
| LMQ24A.. | ≥ 40 | 8 ... 26.7 | ≥ 8 | ≤ 26.7 |
| NMQ24A.. | ≥ 42 | 8 ... 26.7 | ≥ 8 | ≤ 26.7 |

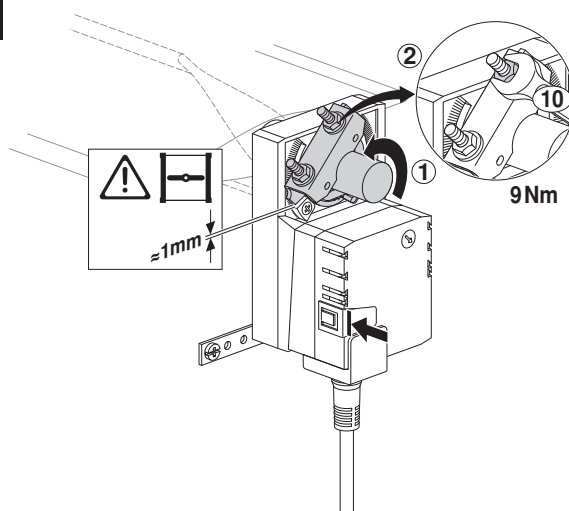
2



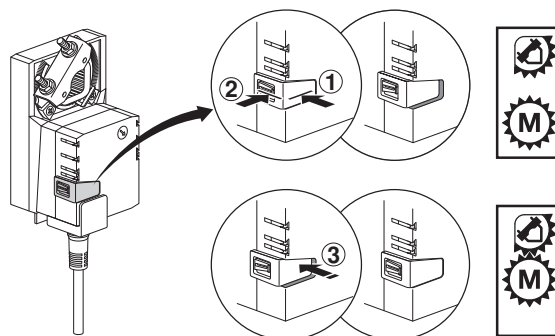
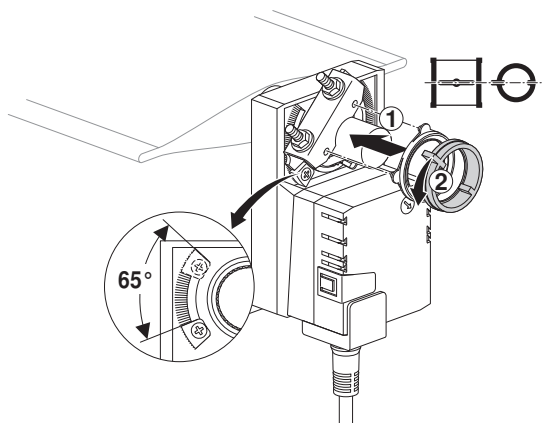
3

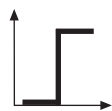


4

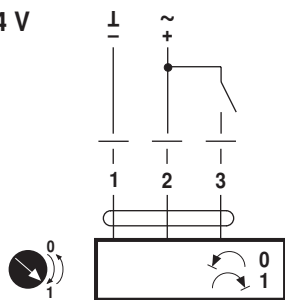


5





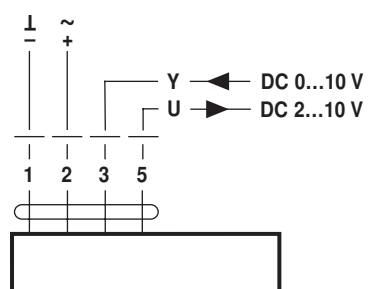
AC 24 V / DC 24 V



LMQ24A..
NMQ24A..



AC 24 V / DC 24 V



LMQ24A-SR..
LMQ24A-MF..
LMQ24A-SRV-ST
NMQ24A-SR..
NMQ24A-MF..
NMQ24A-SRV-ST

SALES CONTACT



www.airmax-hvac.com



080-614-4944, 063-268-8080



@airmax (Line Official)



windcontrol.info@gmail.com



Address

เลขที่ 56/392 หมู่ที่ 12
ตำบลศีรษะจรเข้น้อย
อำเภอบางเสาธง
จังหวัดสมุทรปราการ
10540

