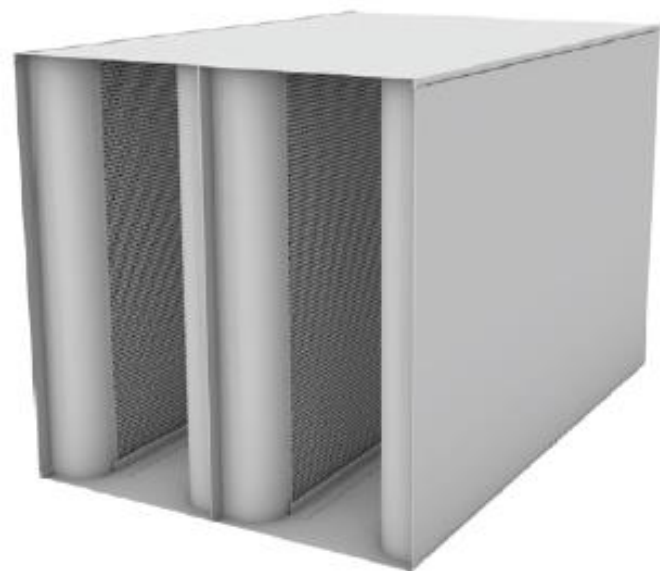
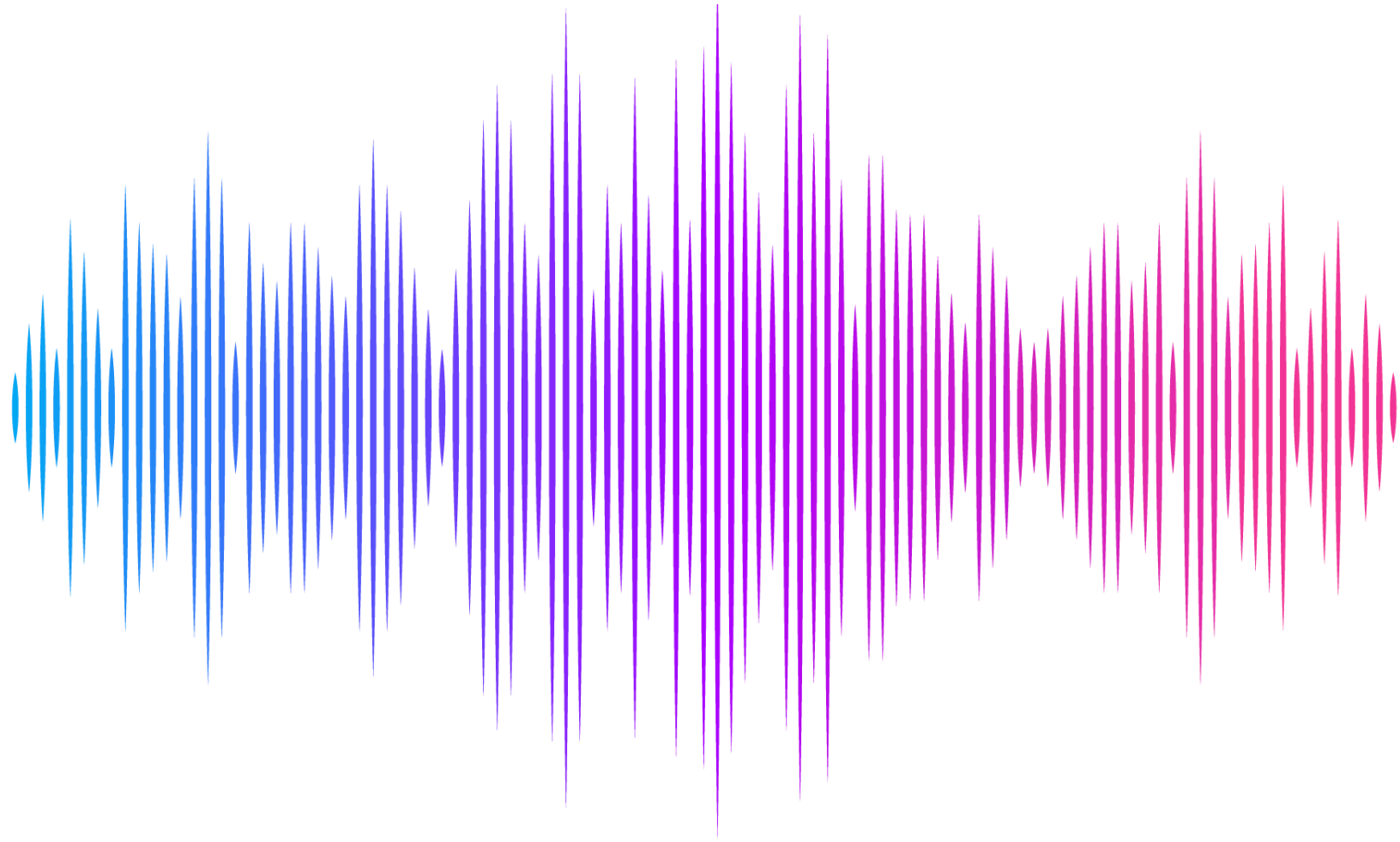


AIRMAX[®]

NOISE CONTROL PRODUCTS



RECTANGULAR SILENCERS

APPLICATION :

- Ventilation systems
- Machine housings
- Exhaust silencers for combustion engines
- Compressors
- Transformers
- Air handling unit
- Gas turbines (power plants, boilers)
- Pumps

BENEFITS :

- Designed to match the dimensions of the connecting equipment or ductwork
- No transitions or plenums required
- Aerodynamic nose design and tapered tails to minimize pressure drop
- Double the number of silencer baffle configurations available for more precise matching of silencers to applications

DESIGN OPTIONS :

- Cleanable/removable baffle designs for dirty applications including special silencers that can be serviced in-situ
- Tapered transition / evase silencers for attenuation in restricted spaces
- Insert silencers (baffles and support structure, without casing) for installation in pre-existing ductwork and stacks

ACCESSORY :

- Galvanized and stainless steel mesh bird, insect and safety screens
- Flanges match drilled to connecting equipment or ductwork; rectangular or circular
- Mounting brackets, support legs, saddles and feet for silencer installation
- Access panels and doors for inspection of internals
- Variety of fabric, film and mesh baffle liners available for different types of service
- Pressure and flow measurement devices including pressure taps, rings and piezometer tubes

DETAILS :

Shell Material : 20 gauge (1.0) galvanized steel

Baffle Material : 22 gauge (0.7) perforated galvanized steel

Acoustic Fill : Glass Fiber

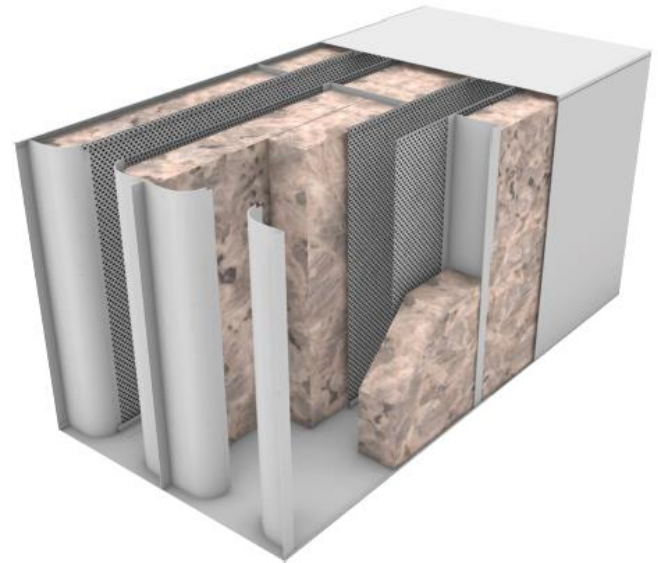
Velocity : Up to 3000 fpm maximum

Pressures : Up to 30" in.wg.

Temperatures : Up to 250° F

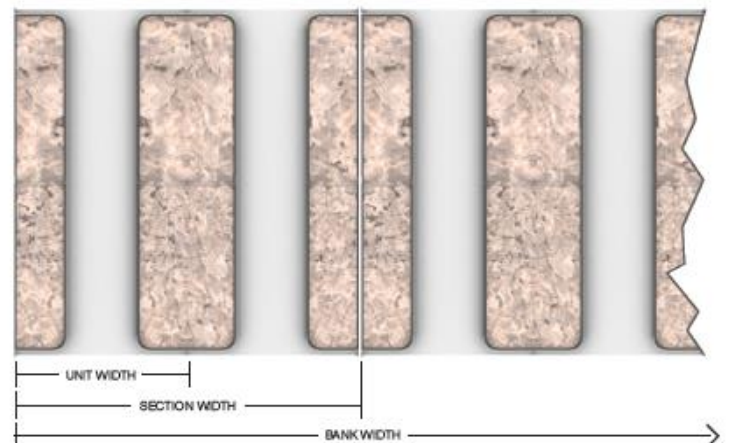
Sizes : From 8" X 8" X 24" long to 240" X 240" X 120" long

Paint finishes : Alkyd and enamel finishes available.



MULTIPLE SECTIONS :

Rectangular silencers are fabricated to align with project ductwork dimensions. A range of Unit Widths are available for a given duct dimension. These are grouped in single sections that are limited in size for shipping and handling purposes. Multiple sections are field assembled in silencer banks as needed to align with project specific requirements.



PERFORMANCE OPTIONS :

Fill Material : Fiberglass

Other

Fill Protection : None

Polymer Film

Fiberglass Cloth

CONSTRUCTION OPTION :

Materials: Galvanized Steel(Std.)

304 Stainless Steel

316 Stainless Steel

Casing Gauge: 20 Gauge (standard)

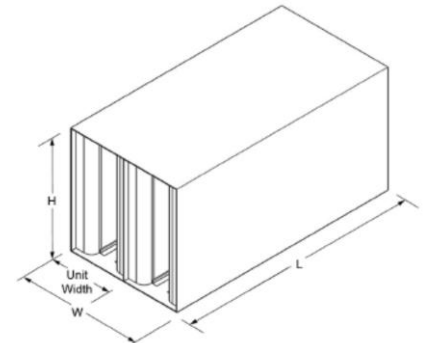
22 Gauge

18 Gauge

Perforated Gauge: 26 Gauge (standard)

22 Gauge

MODEL : AM (Type A)

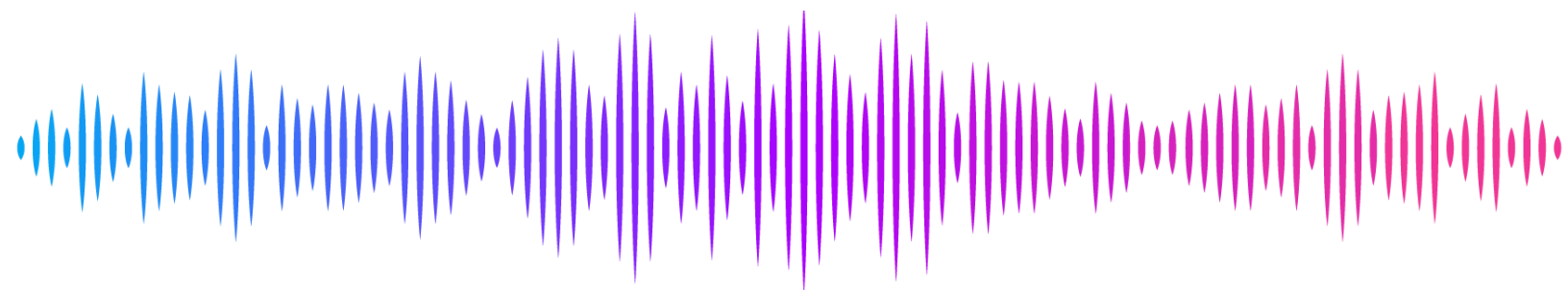


Performance Data : Dynamic Insertion Loss (dB) @ 5 m/s face velocity

Model	Length, Inch (mm)	Octave Band Center Frequency, (Hz)								Re,dB (A)
		63	125	250	500	1K	2K	4K	8K	
AM	24 (600)	1	3	7	13	21	19	11	9	11.5
	36 (900)	1	3	8	17	29	25	14	10	13.8
	48 (1200)	1	4	9	21	35	29	16	11	15.4
	60 (1500)	2	6	12	25	43	33	19	14	18.4
	72 (1800)	2	8	15	28	46	38	23	16	21.1
	84 (2100)	3	11	18	31	50	44	27	19	24.4
	96 (2400)	4	13	22	34	54	48	30	21	26.9
	108 (2700)	5	16	24	37	57	53	33	23	29.6
	120 (3000)	6	18	28	40	60	58	36	25	31.7

Performance Notes

1. Information is subject to change without notice or obligation.
2. Dimensions in parenthesis () are millimeters.
3. Data derived from independent laboratory tests.
5. Maximum differential pressure: 8 in. wg.



SALES CONTACT



www.airmax-hvac.com



080-614-4944, 063-268-8080



@airmax (Line Official)



windcontrol.info@gmail.com



Address

เลขที่ 56/392 หมู่ที่ 12
ตำบลศรีชะอรเข้่น้อย
อำเภอบางเสาธง
จังหวัดสมุทรปราการ
10540