

CENTRIFUGAL FANS



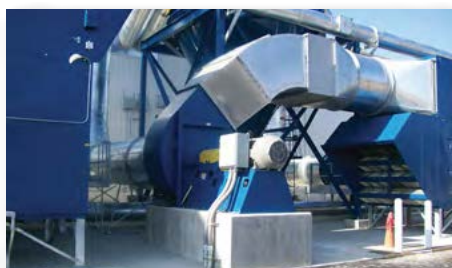
OVERVIEW



Model BC-SW
Supply & Exhaust



Model BCS
Regenerative Thermal Oxidizer



Model BCS
Dust Collection



Model BCS
Regenerative Thermal Oxidizer

CENTRIFUGAL FANS

Centrifugal Fans are designed for general HVAC and industrial applications where large volumes of clean air are required at low to moderate pressures. With backward inclined, backward curved, backward inclined airfoil and forward curved impeller types, centrifugal fans offer the flexibility to match the performance and application at the highest efficiency. Most models are available in single-wide or double-wide configurations which allow for even higher volumes of air.

WHEEL TYPES

Single Thickness Backward Inclined, Backward Curved, Forward Curved, Airfoil

TYPICAL INDUSTRIES

General HVAC (exhaust, filtration, return and supply, air of commercial buildings), Automotive, Fertilizer, Metal & Mineral Processing, Pulp & Paper, Petrochemical, Pharmaceutical, Power, Water & Wastewater Treatment

COMMON ACCESSORIES

Access Door, Drain, Flanged Inlet/Outlet, Companion Flanges, Inlet/Outlet Screens, Shaft Guard, Bearing Guard, Belt Guard, Shaft Seal, Lube Lines, Piezometer Ring, Split Housing, Insulation Pins, Steel Wall or Aluminum Clad Insulated Housing, Inlet Box, Inlet & Outlet Dampers, External or Nested Inlet Vanes

OPTIONAL CONSTRUCTION

High Temperature, Swingout, Split Housings, Special Materials, Spark Resistant Construction (Type A, B and C), Nominally Leak-Tight Construction, ATEX

CERTIFICATIONS

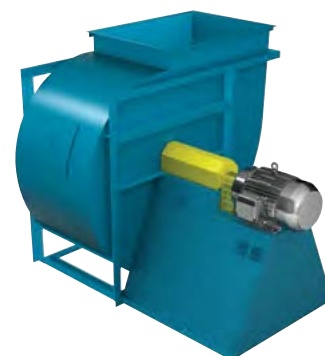
AMCA Sound/Air and FEG, UL 705 Listed for Electrical



BAE-SW

AIRFOIL WHEEL, SWSI

- > 12.25 to 98.25 inches (315 mm to 2,500 mm) wheel diameters
- > Airflow to 233,100 CFM (396,000 m³/hour)
- > Static pressure to 20 inches w.g. (4,970 Pa)
- > AMCA licensed for Sound, Air and Fan Efficiency Grade
- > UL 705 listing available
- > **Typical Applications:** Aeration, Forced Draft, Exhaust Applications, Air Handling Units, Process Cooling, Clean Rooms, Explosion-Proof Processes, General HVAC, Green/LEED, Filtration Systems

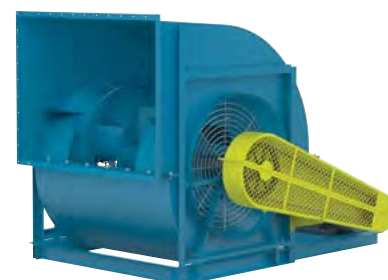


CATALOG 370

BAE-DW

AIRFOIL WHEEL, DWDI

- > 12.25 to 98.25 inches (315 mm to 2,500 mm) wheel diameters
- > Airflow to 419,500 CFM (712,700 m³/hour)
- > Static pressure to 14 inches w.g. (3,480 Pa)
- > AMCA licensed for Sound, Air and Fan Efficiency Grade
- > UL 705 listing available
- > **Typical Applications:** Aeration, Air Handling Units, Exhaust Applications, Explosion-Proof Processes, Clean Rooms, General HVAC, Green/LEED



CATALOG 370

BAF-SW

AIRFOIL WHEEL, SWSI

- > 12.25 to 98.25 inches (315 mm to 2,500 mm) wheel diameters
- > Airflow to 277,500 CFM (471,500 m³/hour)
- > Static pressure to 20 inches w.g. (4,970 Pa)
- > AMCA licensed for Sound, Air and Fan Efficiency Grade
- > UL 705 listing available
- > **Typical Applications:** Air Handling Units, Exhaust Applications, Explosion-Proof Processes, General HVAC, Green/LEED

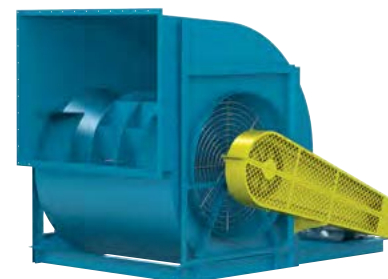


FAN SELECTOR

BAF-DW

AIRFOIL WHEEL, DWDI

- > 12.25 to 89 inches (315 mm to 2,265 mm) wheel diameters
- > Airflow to 344,300 CFM (585,000 m³/hour)
- > Static pressure to 14 inches w.g. (3,480 Pa)
- > AMCA licensed for Sound, Air and Fan Efficiency Grade
- > UL 705 listing available
- > **Typical Applications:** Air Handling Units, Exhaust Applications, Explosion-Proof Processes, General HVAC, Green/LEED



FAN SELECTOR



CATALOG 300



BC-SW

FLAT-BLADED BACKWARD INCLINED WHEEL, SWSI

- > 12.25 to 98.25 inches (315 mm to 2,500 mm) wheel diameters
- > Airflow to 277,500 CFM (471,500 m³/hour)
- > Static pressure to 20 inches w.g. (4,970 Pa)
- > AMCA licensed for Sound, Air and Fan Efficiency Grade
- > UL 705 listing available
- > **Typical Applications:** Air Pollution Control, High Temperature, Chemical/Corrosive Environments, Exhaust, Water Treatment, Filtration/Dust Collection, Explosion-Proof Processes, General HVAC, Green/LEED, General Manufacturing, Drying Applications



CATALOG 300



BC-DW

FLAT-BLADED BACKWARD INCLINED WHEEL, DWDI

- > 12.25 to 89 inches (315 mm to 2,265 mm) wheel diameters
- > Airflow to 344,300 CFM (585,000 m³/hour)
- > Static pressure to 14 inches w.g. (3,480 Pa)
- > AMCA licensed for Air and Fan Efficiency Grade
- > UL 705 listing available
- > **Typical Applications:** Exhaust Applications, Dust Collection, Explosion-Proof Processes, General HVAC, Green/LEED



CATALOG 400

BCS

BACKWARD CURVED WHEEL, HIGH PRESSURE/HIGH VOLUME

- > 16.5 to 89 inches (420 mm to 2,265 mm) wheel diameters
- > Airflow to 280,000 CFM (475,700 m³/hour)
- > Static pressure to 40 inches w.g. (9,950 Pa)
- > **Typical Applications:** Air Pollution Control, High Temperature, Chemical/Corrosive Environments, Exhaust, Water Treatment, Filtration/Dust Collection, Explosion-Proof Processes, General HVAC, Green/LEED, General Manufacturing, Drying Applications



CATALOG 410



BCSF

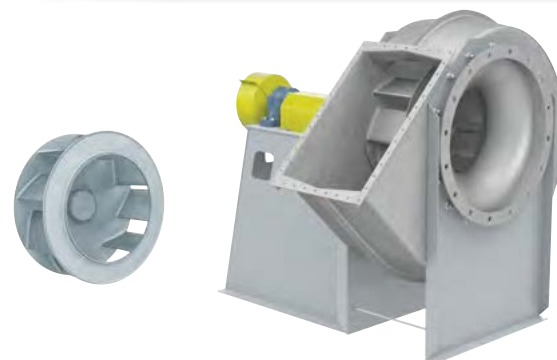
BACKWARD CURVED WHEEL, HIGH PRESSURE COMPOSITE FAN

- > 16.5 to 60 inches (420 mm to 1,525 mm) wheel diameters
- > Airflow to 145,900 CFM (247,900 m³/hour)
- > Static pressure to 34 inches w.g. (8,450 Pa)
- > AMCA licensed for Sound, Air and Fan Efficiency Grade
- > **Typical Applications:** Chemical/Corrosive Environments, Marine, Water Treatment, Exhaust Applications, Process Air, Explosion-Proof Processes, Air Pollution Control, High Moisture Environments, General HVAC

BAFF

BACKWARD INCLINED AIRFOIL WHEEL, COMPOSITE FAN

- > 12.4 to 24.8 inches (315 mm to 630 mm) wheel diameters
- > Airflow to 12,300 CFM (20,900 m³/hour)
- > Static pressure to 13 inches w.g. (3,250 Pa)
- > **Typical Applications:** Chemical/Corrosive Environments, Marine, Water Treatment, Exhaust Applications, Process Air, Explosion-Proof Processes, Air Pollution Control, High Moisture Environments, General HVAC

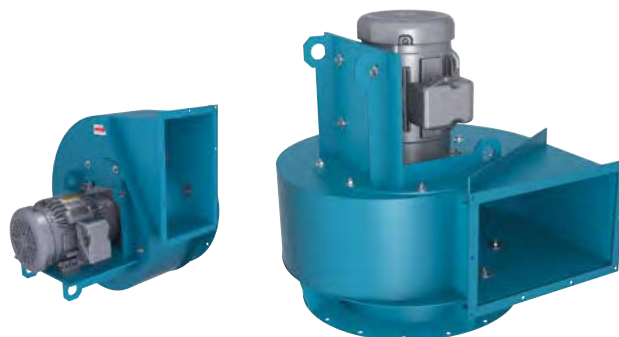


 CATALOG 430

TCBI

FLAT-BLADED BACKWARD INCLINED CENTRIFUGAL FAN, SWSI

- > 14.19 to 22.56 inches (360 mm to 575 mm)
- > 3 HP to 30 HP
- > Airflow to 14,400 CFM (24,470 m³/hour)
- > Static pressures to 18 inches w.g. (4,480 Pa)
- > **Typical Applications:** Dust Collection



 CATALOG 330

NFC-SW, NFC-DW, FC-DW

FORWARD CURVED CENTRIFUGAL WHEEL, SWSI & DWDI

- > 12.25 to 49 inches (315 mm to 1,245 mm) wheel diameters
- > Airflow to 96,500 CFM (164,000 m³/hour)
- > Static pressure to 4 inches w.g. (990 Pa)
- > **Typical Applications:** Air Handling Units, Exhaust Applications, Energy Recovery, Explosion-Proof Processes, General HVAC, High Temperature, Green/LEED

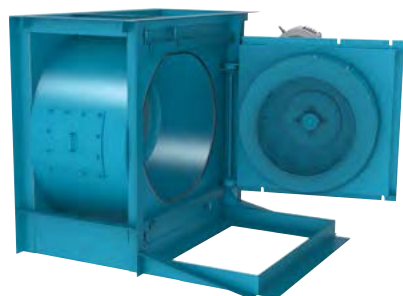


 CATALOG 150

EASY ACCESS & SPLIT HOUSINGS

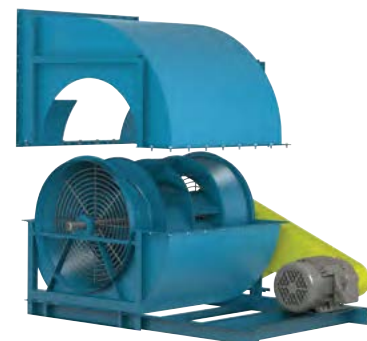
AVAILABLE ON THE FOLLOWING MODELS

- > BC-SW & BC-DW
- > BAE-SW & BAE-DW
- > BAF-SW & BAF-DW
- > BCS
- > NFC-SW & NFC-DW



Easy Access
Swingout Construction

Fan & Blower
Twin City



Split Housings
(Pie-Shaped housings also available)

SALES CONTACT



www.airmax-hvac.com



080-614-4944, 063-268-8080



@airmax (Line Official)



windcontrol.info@gmail.com



Address

เลขที่ 56/392 หมู่ที่ 12
ตำบลศรีชะอรเข้้น้อย
อำเภอบางเสาธง
จังหวัดสมุทรปราการ
10540

