

# FIBERGLASS FANS

## OVERVIEW



Model BCSF  
Scrubber Fan



Model BCSF  
Odor Control, Waste Management



Model BCSF  
Odor Control, Waste Water Treatment



Model BCSF  
Paper Mill

### FIBERGLASS FANS

Fiberglass Fans are specifically designed for the exhaust of moisture-laden, corrosive, or chemically contaminated air. All fans feature molded fiberglass housings that are virtually impossible to dent, crack, or break. FRP offers a more economical solution compared to stainless steel or other exotic alloys. Multiple wheel types and materials are available to meet any corrosive process requirements while maintaining quiet operation and high efficiency.

### WHEEL/PROPELLER TYPES

Single Thickness Backward Inclined, Airfoil, Open Radial, Axial, Propeller

### TYPICAL INDUSTRIES

Agriculture, Air Pollution Control, Automotive, Car Wash, Cement, Chemical, Coal, Composting, Ethanol, Fertilizer, Food & Beverage, Foundry, General Manufacturing, Glass, HVAC, Industrial Processes, Institutional & Hospitality, Marine, Metal & Minerals, Mining, OEM, Petrochemical, Pharmaceutical, Power Generation, Pulp & Paper, Steel Processing, Textile, Water Treatment

### COMMON ACCESSORIES

OSHA Belt Guards, Shaft and Bearing Guards, Inlet and Outlet Guards, Weather Covers, Shaft Seals, Access Doors, Inspection Doors, Cleanout Doors, Housing Drains, Flanged Inlets and Outlets, Dampers and Shutters, Unitary Bases

### OPTIONAL CONSTRUCTION

Static Grounding, ASTM D4167 Construction, Stainless Steel Fan Shaft, Synthetic Surface Veil, Fire Retardant Resin, Vinyl Ester



## BCSF

BACKWARD CURVED HIGH PRESSURE COMPOSITE FANS, SWSI

- > 16.5 to 60 inches (420 mm to 1,525 mm) wheel diameters
- > Airflow to 145,000 CFM (246,400 m<sup>3</sup>/hour)
- > Static pressure to 34 inches w.g. (8,470 Pa)
- > AMCA licensed for Sound, Air and Fan Efficiency Grade
- > **Typical Applications:** Chemical/Corrosive Environments, Marine, Water Treatment, Air Pollution Control, Exhaust Applications, Process Air, Explosion-Proof Processes, General HVAC, High Moisture Environments

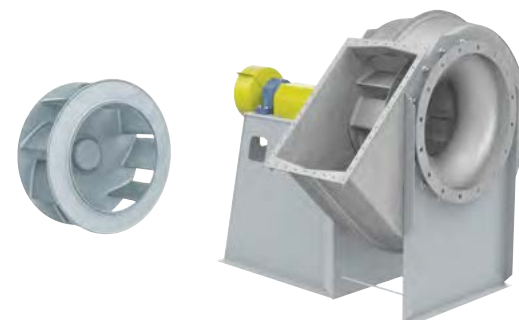


CATALOG 410

## BAFF

FIBERGLASS SW AIRFOIL FAN, BIA WHEEL

- > 12.4 to 24.8 inches (315 mm to 630 mm) wheel diameters
- > Airflow to 12,300 CFM (20,900 m<sup>3</sup>/hour)
- > Static pressure to 13 inches w.g. (3,230 Pa)
- > **Typical Applications:** Chemical/Corrosive Environments, Marine, Water Treatment, Exhaust Applications, Explosion-Proof Processes, Air Pollution Control, Process Air, High Moisture Environments, General HVAC



CATALOG 430

## RBOF

FIBERGLASS RADIAL BLADE CENTRIFUGAL FAN

- > 10.63 to 57.5 inches (270 mm to 1,465 mm) wheel diameters
- > Airflow to 38,300 CFM (65,100 m<sup>3</sup>/hour)
- > Static pressure to 18 inches w.g. (4,480 Pa)
- > AMCA licensed for Air and Fan Efficiency Grade
- > **Typical Applications:** Chemical/Corrosive Environments, Marine, Water Treatment, Exhaust Applications, Process Air, Explosion-Proof Processes, Air Pollution Control, General HVAC, High Moisture Environment



CATALOG 430 & 431

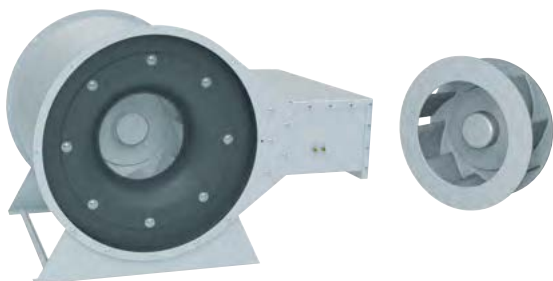
## HPF

FIBERGLASS HIGH PRESSURE BLOWER, RADIAL BLADE

- > 18 to 28 inches (460 mm to 715 mm) wheel diameters
- > Airflow to 4,700 CFM (8,000 m<sup>3</sup>/hour)
- > Static pressure to 36 inches w.g. (8,950 Pa)
- > **Typical Applications:** Exhaust Applications, Water Treatment, Explosion-Proof Processes, Chemical/Corrosive Environments, Air Pollution Control, Process Air, High Moisture Environments, General HVAC, Marine



CATALOG 430



## ILCF

FIBERGLASS INLINE CENTRIFUGAL FAN

- > 12.4 to 39.4 inches (315 mm to 1,000 mm) wheel diameters
- > Airflow to 35,900 CFM (61,000 m<sup>3</sup>/hour)
- > Static pressure to 7 inches w.g. (1,740 Pa)
- > **Typical Applications:** Exhaust Applications, Water Treatment, Marine, Chemical/Corrosive Environments, Air Pollution Control, Process Air, High Moisture Environments

CATALOG 430



## PRVF

FIBERGLASS TUBEAXIAL ROOF VENTILATOR

- > 14 to 60 inches (355 mm to 1,525 mm) wheel diameters
- > Airflow to 50,800 CFM (86,300 m<sup>3</sup>/hour)
- > Static pressure to 1.5 inches w.g. (370 Pa)
- > **Typical Applications:** Exhaust Applications, Water Treatment, Marine, Chemical/Corrosive Environments, Air Pollution Control, Process Air, High Moisture Environments

CATALOG 430



## TAMF

FIBERGLASS TYPE FG7 TUBEAXIAL FAN, BELT DRIVEN

- > 14 to 60 inches (355 mm to 1,525 mm) wheel diameters
- > Airflow to 51,900 CFM (88,200 m<sup>3</sup>/hour)
- > Static pressure to 1.5 inches w.g. (370 Pa)
- > **Typical Applications:** Exhaust Applications, Water Treatment, Marine, Chemical/Corrosive Environments, Air Pollution Control, Process Air, High Moisture Environments

CATALOG 430



## TAHF

FIBERGLASS TYPE TF TUBEAXIAL FAN, BELT DRIVEN

- > 12 to 60 inches (305 mm to 1,525 mm) wheel diameters
- > Airflow to 83,200 CFM (141,400 m<sup>3</sup>/hour)
- > Static pressure to 2.5 inches w.g. (620 Pa)
- > **Typical Applications:** Exhaust Applications, Water Treatment, Marine, Chemical/Corrosive Environments, Air Pollution Control, Process Air, High Moisture Environments

CATALOG 430



## VAHF

FIBERGLASS TYPE TF VANEAXIAL FAN, BELT DRIVEN

- > 12 to 60 inches (305 mm to 1,525 mm) wheel diameters
- > Airflow to 81,200 CFM (138,000 m<sup>3</sup>/hour)
- > Static pressure to 4 inches w.g. (990 Pa)
- > **Typical Applications:** Exhaust Applications, Water Treatment, Marine, Chemical/Corrosive Environments, Air Pollution Control, Process Air, High Moisture Environments



 CATALOG 430

## TCWPF

FIBERGLASS PANEL FAN, DIRECT DRIVE

- > 12 to 48 inches (305 mm to 1,220 mm) wheel diameters
- > Airflow to 41,900 CFM (71,200 m<sup>3</sup>/hour)
- > Static pressure to 1 inch w.g. (250 Pa)
- > **Typical Applications:** Corrosive Environments, General HVAC, Marine, Waste Water Treatment, High Moisture Environments, Swimming Pools



 CATALOG 430

## FA

FIBERGLASS DOWNBLAST CENTRIFUGAL ROOF VENTILATOR  
DIRECT DRIVE

- > 7 to 18.5 inches (180 mm to 470 mm) wheel diameters
- > Airflow to 3,125 CFM (5,300 m<sup>3</sup>/hour)
- > Static pressure to 1 inch w.g. (250 Pa)
- > **Typical Applications:** Chemical/Corrosive Environments, High Moisture Environments, Marine, General HVAC, Swimming Pools, Waste Water Treatment



 CATALOG 3000

## FAB

FIBERGLASS DOWNBLAST CENTRIFUGAL ROOF VENTILATOR  
BELT DRIVEN

- > 12.5 to 40 inches (320 mm to 1,020 mm) wheel diameters
- > Airflow to 19,500 CFM (33,100 m<sup>3</sup>/hour)
- > Static pressure to 1.75 inches w.g. (440 Pa)
- > **Typical Applications:** Chemical/Corrosive Environments, High Moisture Environments, Marine, General HVAC, Swimming Pools, Waste Water Treatment



 CATALOG 3000



 CATALOG 3000

## WA

FIBERGLASS UPBLAST CENTRIFUGAL ROOF VENTILATOR,  
DIRECT DRIVE

- > 7 to 18.5 inches (180 mm to 470 mm) wheel diameters
- > Airflow to 3,030 CFM (5,100 m<sup>3</sup>/hour)
- > Static pressure to 1 inch w.g. (250 Pa)
- > **Typical Applications:** Chemical/Corrosive Environments, High Moisture Environments, General HVAC, Exhaust Applications, Marine, Swimming Pools, Waste Water Treatment



 CATALOG 3000

## WAB

FIBERGLASS UPBLAST CENTRIFUGAL ROOF VENTILATOR,  
BELT DRIVEN

- > 14.5 to 40 inches (370 mm to 1,020 mm) wheel diameters
- > Airflow to 21,500 CFM (36,500 m<sup>3</sup>/hour)
- > Static pressure to 2 inch w.g. (500 Pa)
- > **Typical Applications:** Chemical/Corrosive Environments, High Moisture Environments, General HVAC, Exhaust Applications, Marine, Swimming Pools, Waste Water Treatment



 CATALOG 3000

## HA

FIBERGLASS CENTRIFUGAL WALL VENTILATOR, DIRECT DRIVE

- > 7 to 18.5 inches (180 mm to 470 mm) wheel diameters
- > Airflow to 2,625 CFM (4,500 m<sup>3</sup>/hour)
- > Static pressure to 1 inch w.g. (250 Pa)
- > **Typical Applications:** Chemical/Corrosive Environments, High Moisture Environments, General HVAC, Exhaust Applications, Marine, Swimming Pools, Waste Water Treatment



 CATALOG 3000

## HAB

FIBERGLASS CENTRIFUGAL WALL VENTILATOR, BELT DRIVEN

- > 12.5 to 30.5 inches (320 mm to 770 mm) wheel diameters
- > Airflow to 9,820 CFM (16,700 m<sup>3</sup>/hour)
- > Static pressure to 1 inch w.g. (250 Pa)
- > **Typical Applications:** Chemical/Corrosive Environments, High Moisture Environments, General HVAC, Exhaust Applications, Marine, Swimming Pools, Waste Water Treatment

## SA

FIBERGLASS CENTRIFUGAL WALL VENTILATOR, DIRECT DRIVE

- > 7 to 14.5 inches (180 mm to 370 mm) wheel diameters
- > Airflow to 2,230 CFM (3,800 m<sup>3</sup>/hour)
- > Static pressure to 1 inch w.g. (250 Pa)
- > **Typical Applications:** Chemical/Corrosive Environments, High Moisture Environments, General HVAC, Exhaust Applications, Marine, Swimming Pools, Waste Water Treatment



 CATALOG 3000

## MA

FIBERGLASS SQUARE GRAVITY RELIEF & INTAKE VENTILATOR

- > 6 to 60 inches (155 mm to 1,525 mm) square throat sizes
- > Airflow to 40,000 CFM (68,000 m<sup>3</sup>/hour)
- > Static pressure to 1 inch w.g. (250 Pa)
- > **Typical Applications:** Gravity Relief



 CATALOG 3000

## FIBERGLASS ROOF CURBS

PREFABRICATED ROOF CURBS

- > 12" high prefabricated roof curb
- > 3½" cant, corner gussets
- > Treated 1½" x 3½" treated wood nailer
- > Damper tray
- > **Options:** 2" thick fiberglass insulation



 CATALOG 4910

Fan & Blower  
**Twin City**

# SALES CONTACT



[www.airmax-hvac.com](http://www.airmax-hvac.com)



080-614-4944, 063-268-8080



@airmax (Line Official)



[windcontrol.info@gmail.com](mailto:windcontrol.info@gmail.com)



Address

เลขที่ 56/392 หมู่ที่ 12  
ตำบลศีรษะจรเข้น้อย  
อำเภอบางเสาธง  
จังหวัดสมุทรปราการ  
10540

