

KITCHEN & RESTAURANT EXHAUST FANS



OVERVIEW



Model DCRUR
Grease Hood Exhaust

KITCHEN & RESTAURANT EXHAUST FANS

Kitchens and restaurants require specialized equipment for exhausting grease contaminated air. Ovens, stoves, grills and dishwashers produce moist, hot, smoky, and grease-laden air that must be removed from the kitchen and discharged away from building surfaces. Twin City Fan offers a full line of UL 762 listed kitchen exhaust fans and grease collection systems that are designed for kitchen and restaurant use.

WHEEL TYPES

Backward Inclined Centrifugal, Mixed Flow

COMMON ACCESSORIES

Grease Box and Drain Connections, Belt Guards, Motor Covers, Inlet/Outlet Screens and Guards, Inlet/Outlet Companion Flanges, Insulated Jackets, Vented Roof Curbs, Special Coatings, Disconnect Switches

CERTIFICATIONS

AMCA Sound/Air and FEG, UL 705 Listed for Electrical, UL 762 Listed for the Exhaust of Grease Laden Air, OSHPD Seismic Preapproval per OSP-0395-10, Miami-Dade County Hurricane Rating Per NOA No. 12-0914.12

APPLICATIONS

Kitchen Exhaust, Dishwasher Exhaust



Model BCRUR
Kitchen Exhaust



Model BCRUR
Kitchen Exhaust



DCRUR

CENTRIFUGAL KITCHEN ROOF EXHAUSTER, UPBLAST, DIRECT DRIVE
UL 762 LISTED FOR THE EXHAUST OF GREASE LADEN AIR

- > 8.38 to 18.25 inches (215 mm to 465 mm) wheel diameters
- > Airflow to 3,865 CFM (6,600 m³/hour)
- > Static pressure to 1.5 inches w.g. (370 Pa)
- > AMCA licensed for Sound, Air and Fan Efficiency Grade
- > UL 762 listed for Grease Laden Air



GRIDSMART
Available With
GridSmart™ EC Motors



Available For
Quickship



CATALOG 4105

BCRUR

CENTRIFUGAL KITCHEN ROOF EXHAUSTER, UPBLAST, BELT DRIVEN
UL 762 LISTED FOR THE EXHAUST OF GREASE LADEN AIR

- > 12.25 to 39.37 inches (315 mm to 1,000 mm) wheel diameters
- > Airflow to 17,400 CFM (29,600 m³/hour)
- > Static pressure to 3.25 inches w.g. (810 Pa)
- > AMCA licensed for Sound, Air and Fan Efficiency Grade
- > UL 762 listed for Grease Laden Air



Available For
Quickship



CATALOG 4105

DCRWR

CENTRIFUGAL KITCHEN WALL EXHAUSTER, DIRECT DRIVE
UL 762 LISTED FOR THE EXHAUST OF GREASE LADEN AIR

- > 8.38 to 18.25 inches (215 mm to 465 mm) wheel diameters
- > Airflow to 3,865 CFM (6,600 m³/hour)
- > Static pressure to 1.5 inches w.g. (370 Pa)
- > AMCA licensed for Sound, Air and Fan Efficiency Grade
- > UL 762 listed for Grease Laden Air



GRIDSMART
Available With
GridSmart™ EC Motors



Available For
Quickship



CATALOG 4105

BCRWR

CENTRIFUGAL KITCHEN WALL EXHAUSTER, BELT DRIVEN
UL 762 LISTED FOR THE EXHAUST OF GREASE LADEN AIR

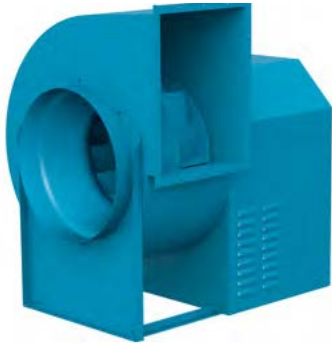
- > 12.25 to 31.5 inches (315 mm to 800 mm) wheel diameters
- > Airflow to 11,600 CFM (19,700 m³/hour)
- > Static pressure to 3.25 inches w.g. (810 Pa)
- > AMCA licensed for Sound, Air and Fan Efficiency Grade
- > UL 762 listed for Grease Laden Air



Available For
Quickship



CATALOG 4105



Available For
Quickship



CATALOG 600

BCVR

FLAT-BLADED BACKWARD INCLINED UTILITY SETS
UL 762 LISTED FOR THE EXHAUST OF GREASE LADEN AIR

- > 10.5 to 36.5 inches (270 mm to 930 mm) wheel diameters
- > Airflow to 29,100 CFM (49,400 m³/hour)
- > Static pressure to 8 inches w.g. (1,990 Pa)
- > AMCA licensed for Sound, Air and Fan Efficiency Grade
- > UL 762 listed for Grease Laden Air



CATALOG 1070

QCLBR

LOW PRESSURE RESTAURANT MIXED FLOW FAN
UL 762 LISTED FOR THE EXHAUST OF GREASE LADEN AIR

- > 12.25 to 73 inches (315 mm to 1,855 mm) wheel diameters
- > Airflow to 105,000 CFM (178,400 m³/hour)
- > Static pressure to 4.5 inches w.g. (1,120 Pa)
- > AMCA licensed for Sound, Air and Fan Efficiency Grade
- > UL 762 listed for Grease Laden Air



CATALOG 1060

QSLR

RESTAURANT MIXED FLOW FAN
UL 762 LISTED FOR THE EXHAUST OF GREASE LADEN AIR

- > 18.25 to 89 inches (465 mm to 2,260 mm) wheel diameters
- > Airflow to 160,000 CFM (271,800 m³/hour)
- > Static pressure to 8 inches w.g. (1,990 Pa)
- > AMCA licensed for Sound, Air and Fan Efficiency Grade
- > UL 762 listed for Grease Laden Air



Available For
Quickship



CATALOG 4215

TCLBR

TUBULAR CENTRIFUGAL RESTAURANT INLINE FAN, BELT DRIVEN
UL 762 LISTED FOR THE EXHAUST OF GREASE LADEN AIR

- > 10.5 to 49 inches (270 mm to 1,245 mm) wheel diameters
- > Airflow to 41,700 CFM (70,800 m³/hour)
- > Static pressure to 4 inches w.g. (990 Pa)
- > AMCA licensed for Sound, Air and Fan Efficiency Grade
- > UL 762 listed for Grease Laden Air

BHRE

HINGED RESTAURANT EXHAUST FAN, BELT DRIVEN
UL 762 LISTED FOR THE EXHAUST OF GREASE LADEN AIR

- > 10.5 to 24.5 inches (270 mm to 625 mm) wheel diameters
- > Airflow to 9,000 CFM (15,300 m³/hour)
- > Static pressure to 5 inches w.g. (1,240 Pa)
- > AMCA licensed for Sound, Air and Fan Efficiency Grade
- > UL 705 and 762 listing available
- > **Typical Applications:** Kitchen Exhaust, Dishwasher Exhaust



CATALOG 610

SELF FLASHING VENTED ROOF CURBS

FOR HIGH TEMPERATURE APPLICATIONS

- > Completely assembled unit, easier to install and less expensive than a field constructed curb
- > Constructed of 18-gauge galvanized steel with continuous welded seams with wide base flashing for weathertight seal to roof
- > Meets NFPA-96 code requirements
- > Top ledge covered with $\frac{3}{16}$ " polystyrene gasket
- > Furnished with ventilation slots



CATALOG 4910

Fan & Blower
Twin City

SALES CONTACT



www.airmax-hvac.com



080-614-4944, 063-268-8080



@airmax (Line Official)



windcontrol.info@gmail.com



Address

เลขที่ 56/392 หมู่ที่ 12
ตำบลศีรษะจรเข้น้อย
อำเภอบางเสาธง
จังหวัดสมุทรปราการ
10540

