

PLUG FANS



Model BCPL
Baking Oven



Model BEPL
Baking Oven



Model BFPL
Baking Oven



OVERVIEW

PLUG FANS

Plug fans offer great versatility for complex system configurations. Equipped with a gusseted mounting panel, they are mounted directly to the plenum wall separating the motor and drive components from the process air. Plug fans provide high efficiency recirculation air with the benefit of easy installation and removal.

APPLICATIONS

Air Curtains, Dyers, Freezers, High Temperature, Kilns, Ovens, Process Applications, Product Cooling, Re-Circulation, Air Heaters, Ceiling, Wall and Floor Panel Plenums, Degreasers, Dryers, Dust Collectors, Evaporators, Packaged Air Handlers, Parts Washers, Penthouses, Smoke Houses, Space Heaters, Spray Booths and other High Temperature Applications

WHEEL TYPES

Flat-Bladed Backward Inclined and Backward Curved

TYPICAL INDUSTRIES

Automotive, Industrial Cooling and Ovens

COMMON ACCESSORIES

Belt Guards, Bearing Guards, Extended Lube Lines, Forklift Lifting Tubes, Integral Inlet Cone, Insulated plug, Piezometer Ring Airflow Measurement System, Shaft Cooler (Slinger), Variable Inlet Vanes, Housings

OPTIONAL CONSTRUCTION

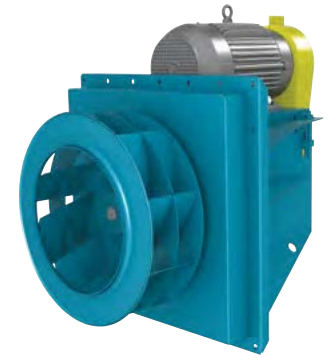
ATEX Construction, High-Temperature Construction to 1000 °F, Pedestal Design for Floor Mounting, Spark Resistant Construction (Type A, B and C), Special Materials (stainless steel, normalized steel), Special Wheel Width & Diameter



BEPL

HIGH EFFICIENCY PLUG FAN, BACKWARD CURVED

- > 12.4 to 49 inches (315 mm to 1,245 mm) wheel diameters
- > Airflow to 76,000 CFM (129,100 m³/hour)
- > Static pressure to 12 inches w.g. (2,980 Pa)
- > Airstream temperatures to 1,000°F (538°C)



 CATALOG 355

BFPL

HIGH EFFICIENCY PLUG FAN, BACKWARD CURVED

- > 12.4 to 49.21 inches (315 mm to 1,250 mm) wheel diameters
- > Airflow to 76,000 CFM (129,100 m³/hour)
- > Static pressure to 12 inches w.g. (2,980 Pa)
- > Airstream temperatures to 1,000°F (538°C)

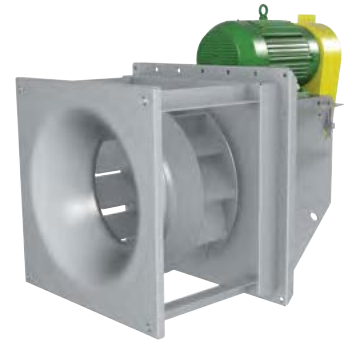


 CATALOG 360

BCPL

PLUG FAN, BC BACKWARD INCLINED WHEEL
NON HVAC APPLICATIONS

- > 12.25 to 49 inches (315 mm to 1,245 mm) wheel diameters
- > Airflow to 57,900 CFM (98,400 m³/hour)
- > Static pressure to 8 inches w.g. (1,980 Pa)
- > Airstream temperatures to 1,000°F (538°C)



 CATALOG 350

Fan & Blower
Twin City

SALES CONTACT



www.airmax-hvac.com



080-614-4944, 063-268-8080



@airmax (Line Official)



windcontrol.info@gmail.com



Address

เลขที่ 56/392 หมู่ที่ 12
ตำบลศรีชะอรเข้่น้อย
อำเภอบางเสาธง
จังหวัดสมุทรปราการ
10540