

PROPELLER ROOF VENTILATORS



OVERVIEW



Model THB
Manufacturing Plant Exhaust



Model LUBMO
Warehouse Exhaust



Model LHB
Storage Facility



Model THD
Glass Manufacturing

PROPELLER ROOF VENTILATORS

Propeller Roof Ventilators provide cost effective, general purpose exhaust ventilation of commercial buildings as well as a large variety of industrial applications. Belt and direct drive models are available with cast aluminum, adjustable pitch or fabricated steel, fixed pitch propellers to meet specific application requirements.

PROPELLER TYPES

Fixed Pitch Fabricated Steel and Cast Aluminum, Adjustable Pitch Cast Aluminum

TYPICAL INDUSTRIES

Agriculture, Air Pollution Control, Automotive, Boilers, Brick, Car Wash, Commercial Plan & Spec, Composting, Ethanol, Food & Beverage, Foundry, General Manufacturing, Glass, Green/LEED, HVAC, Institutional & Hospitality, Metal & Minerals, Microchip, Mining, Nuclear, OEM, Petrochemical, Pharmaceutical, Power Generation, Pulp & Paper, Recycling, Textile, Transportation

COMMON ACCESSORIES

Access Doors, Backdraft Dampers, Roof Curbs, Inlet Guards, Birdscreens, Insect Screens, Two Groove Drive Minimum, Fusible Links, Belt Tubes, Motor Covers, Externally Mounted Conduit Boxes, Tall Base, Curb Hinges, Metal Nameplates, Automatic Belt Tensioners, Extended Lube Lines, Tie Downs, Insulated Hoods, Magnetic Damper Latches, AMCA Spark B Construction, Roof Curbs, Curb Extensions, Disconnect Switches, Single Point Wiring, Special Coatings

CERTIFICATIONS

UL 705 Listed for Electrical, UL Listed for Smoke Control Systems



LUD

LOW PROFILE UPBLAST PROPELLER ROOF VENTILATOR,
DIRECT DRIVE

- > 14 to 48 inches (355 mm to 1,220 mm) wheel diameters
- > Airflow to 34,500 CFM (58,600 m³/hour)
- > Static pressure to 1 inch w.g. (250 Pa)
- > UL 705 listed
- > **Typical Applications:** Data Center Exhaust, General HVAC, General Rooftop Exhaust, Generator Room Ventilation, General Warehouse Ventilation



Available For
Quickship



CATALOG 4870

LUB

LOW PROFILE UPBLAST PROPELLER ROOF VENTILATOR,
BELT DRIVEN

- > 21 to 60 inches (535 mm to 1,525 mm) wheel diameters
- > Airflow to 60,800 CFM (103,300 m³/hour)
- > Static pressure to 1 inch w.g. (250 Pa)
- > UL 705 listed
- > **Typical Applications:** Data Center Exhaust, General HVAC, General Rooftop Exhaust, Generator Room Ventilation, General Warehouse Ventilation



Available For
Quickship



CATALOG 4870

LUBMO

LOW PROFILE MOTOR OUT OF AIRSTREAM UPBLAST
PROPELLER ROOF VENTILATOR, BELT DRIVEN

- > 21 to 60 inches (535 mm to 1,525 mm) wheel diameters
- > Airflow to 59,800 CFM (101,600 m³/hour)
- > Static pressure to 1 inch w.g. (250 Pa)
- > UL 705 listed
- > **Typical Applications:** Data Center Exhaust, General HVAC, General Rooftop Exhaust, Generator Room Ventilation, General Warehouse Ventilation



Available For
Quickship



CATALOG 4870

LUBSH

LOW PROFILE UPBLAST PROPELLER ROOF VENTILATOR, BELT DRIVEN
UL LISTED FOR SMOKE CONTROL SYSTEMS

- > 21 to 60 inches (535 mm to 1,525 mm) wheel diameters
- > Airflow to 59,800 CFM (101,600 m³/hour)
- > Static pressure to 1 inch w.g. (250 Pa)
- > UL listed for Smoke Control Systems
- > **Typical Applications:** Elevator Shaft Exhaust/Pressurization, Emergency Smoke Exhaust, Stairwell Pressurization/Exhaust, General Warehouse Ventilation



Available For
Quickship



CATALOG 4870



CATALOG 4850

TUD

UPBLAST TUBEAXIAL ROOF VENTILATOR, DIRECT DRIVE

- > 14 to 48 inches (355 mm to 1,220 mm) wheel diameters
- > Airflow to 39,100 CFM (66,400 m³/hour)
- > Static pressure to 1.5 inches w.g. (370 Pa)
- > AMCA licensed for Sound, Air and Fan Efficiency Grade
- > UL 705 listed
- > **Typical Applications:** Data Center Exhaust, General HVAC, General Rooftop Exhaust, Generator Room Ventilation, General Warehouse Ventilation



CATALOG 4850

TUB

UPBLAST TUBEAXIAL ROOF VENTILATOR, BELT DRIVEN

- > 14 to 60 inches (355 mm to 1,525 mm) wheel diameters
- > Airflow to 72,400 CFM (123,000 m³/hour)
- > Static pressure to 1.5 inches w.g. (370 Pa)
- > AMCA licensed for Sound, Air and Fan Efficiency Grade
- > UL 705 listed
- > **Typical Applications:** Data Center Exhaust, General HVAC, General Rooftop Exhaust, Generator Room Ventilation, General Warehouse Ventilation



CATALOG 4850

TUBSH

UPBLAST TUBEAXIAL ROOF VENTILATOR, BELT DRIVEN
UL LISTED FOR SMOKE CONTROL SYSTEMS

- > 24 to 60 inches (610 mm to 1,525 mm) wheel diameters
- > Airflow to 70,700 CFM (120,100 m³/hour)
- > Static pressure to 1.5 inches w.g. (370 Pa)
- > AMCA licensed for Sound, Air and Fan Efficiency Grade
- > UL listed for Smoke Control Systems
- > **Typical Applications:** Elevator Shaft Exhaust/Pressurization, Emergency Smoke Exhaust, Stairwell Pressurization/Exhaust, General Warehouse Ventilation



CATALOG 430

PRVF

FIBERGLASS TUBEAXIAL ROOF VENTILATOR

- > 14 to 60 inches (355 mm to 1,525 mm) wheel diameters
- > Airflow to 50,800 CFM (86,300 m³/hour)
- > Static pressure to 1.5 inches w.g. (370 Pa)
- > **Typical Applications:** Exhaust Applications, Water Treatment, Chemical/Corrosive Environments, Air Pollution Control, Process Air, High Moisture Environments

LHD

LOW PROFILE HOODED PRV, DIRECT DRIVE

- > 14 to 48 inches (355 mm to 1,220 mm) wheel diameters
- > Airflow to 35,500 CFM (56,900 m³/hour)
- > Static pressure to 1 inch w.g. (250 Pa)
- > UL 705 listed
- > **Typical Applications:** Data Center Exhaust, General HVAC, General Rooftop Exhaust, Generator Room Ventilation, General Warehouse Ventilation

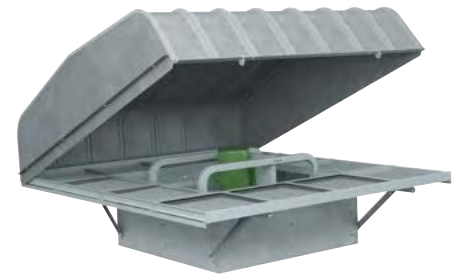


CATALOG 4860

LHDF (FILTERED)

LOW PROFILE HOODED PRV, DIRECT DRIVE

- > 21 to 48 inches (535 mm to 1,220 mm) wheel diameters
- > Airflow to 30,400 CFM (51,600 m³/hour)
- > Static pressure to 1 inch w.g. (250 Pa)
- > UL 705 listed
- > **Typical Applications:** General HVAC, Generator Room Ventilation, General Rooftop Supply, General Warehouse Ventilation



CATALOG 4860

LHB

LOW PROFILE HOODED PRV, BELT DRIVEN

- > 21 to 60 inches (535 mm to 1,525 mm) wheel diameters
- > Airflow to 57,800 CFM (98,200 m³/hour)
- > Static pressure to 1 inch w.g. (250 Pa)
- > UL 705 listed
- > **Typical Applications:** Data Center Exhaust, General HVAC, General Rooftop Exhaust, Generator Room Ventilation, General Warehouse Ventilation



CATALOG 4860

LHBF (FILTERED)

LOW PROFILE HOODED PRV, BELT DRIVEN

- > 21 to 60 inches (535 mm to 1,525 mm) wheel diameters
- > Airflow to 57,600 CFM (97,860 m³/hour)
- > Static pressure to 1 inch w.g. (250 Pa)
- > UL 705 listed
- > **Typical Applications:** General HVAC, Generator Room Ventilation, General Rooftop Supply



CATALOG 4860



 CATALOG 4850



THD

HOODED TUBEAXIAL ROOF VENTILATOR, DIRECT DRIVE

- > 14 to 48 inches (355 mm to 1,220 mm) wheel diameters
- > Airflow to 36,400 CFM (61,800 m³/hour)
- > Static pressure to 1.5 inches w.g. (370 Pa)
- > UL 705 listed
- > **Typical Applications:** Data Center Exhaust, General HVAC, General Rooftop Exhaust, Generator Room Ventilation, General Warehouse Ventilation



 CATALOG 4850



THDF (FILTERED)

HOODED TUBEAXIAL ROOF VENTILATOR, DIRECT DRIVE

- > 21 to 48 inches (355 mm to 1,220 mm) wheel diameters
- > Airflow to 36,400 CFM (61,800 m³/hour)
- > Static pressure to 1.5 inches w.g. (370 Pa)
- > UL 705 listed
- > **Typical Applications:** General HVAC, Generator Room Ventilation, General Rooftop Supply, General Warehouse Ventilation



 CATALOG 4850



THB

HOODED TUBEAXIAL ROOF VENTILATOR, BELT DRIVEN

- > 14 to 60 inches (355 mm to 1,525 mm) wheel diameters
- > Airflow to 63,800 CFM (108,400 m³/hour)
- > Static pressure to 1.5 inches w.g. (370 Pa)
- > UL 705 listed
- > **Typical Applications:** Data Center Exhaust, General HVAC, General Rooftop Exhaust, Generator Room Ventilation, General Warehouse Ventilation



 CATALOG 4850



THBF (FILTERED)

HOODED TUBEAXIAL ROOF VENTILATOR, BELT DRIVEN

- > 21 to 60 inches (535 mm to 1,525 mm) wheel diameters
- > Airflow to 63,800 CFM (108,400 m³/hour)
- > Static pressure to 1.5 inches w.g. (370 Pa)
- > UL 705 listed
- > **Typical Applications:** General HVAC, Generator Room Ventilation, General Rooftop Supply, General Warehouse Ventilation

SALES CONTACT



www.airmax-hvac.com



080-614-4944, 063-268-8080



@airmax (Line Official)



windcontrol.info@gmail.com



Address

เลขที่ 56/392 หมู่ที่ 12
ตำบลศรีชะอรเข้้น้อย
อำเภอบางเสาธง
จังหวัดสมุทรปราการ
10540

