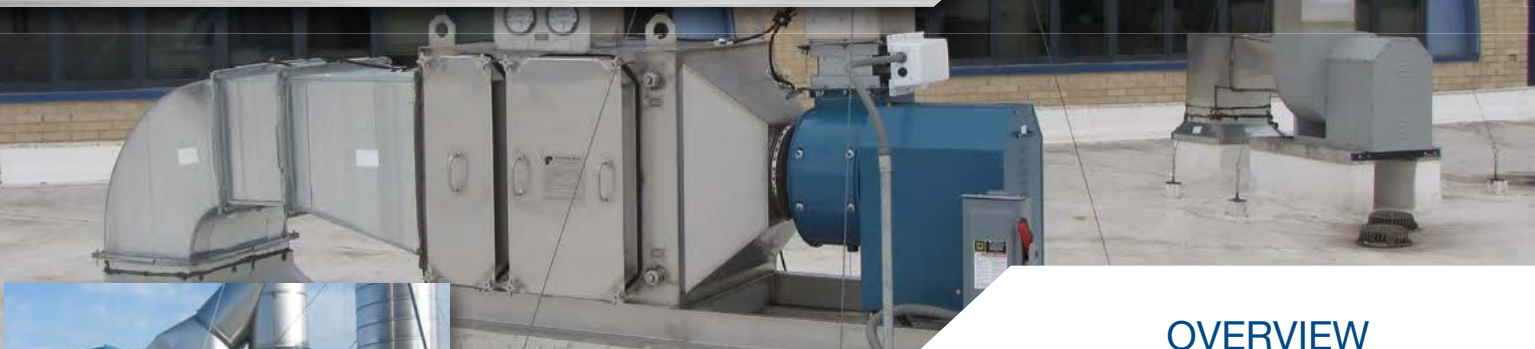


UTILITY SETS



OVERVIEW



Model BCV
Process Exhaust



Model BCJ
Fume Exhaust



Model BCV
Exhaust



BCV
Building Exhaust

UTILITY SETS

Utility sets are an excellent choice for general exhaust and supply requirements of commercial and light industrial applications. They are suitable for indoor usage, and outdoor usage with the addition of a weather cover to enclose the motor and drives. Fan housings are continuously welded and are constructed of heavy gauge steel, aluminum, or stainless steel. TCF also offers a full line of Junior Utility Sets that are designed to provide optimal performance with minimal physical dimensions.

WHEEL TYPES

Flat-Bladed Backward Inclined, Airfoil, Forward Curved

TYPICAL INDUSTRIES

Aerospace, Asphalt, Agriculture, Air Pollution Control, Automotive, Boilers, Brick, Car Wash, Cement, Chemical, Clean Rooms, Coal, Commercial Plan & Spec, Composting, Ethanol, Food & Beverage, Foundry, General Manufacturing, Glass, Green/LEED, HVAC, Industrial Processes, Institutional & Hospitality, Marine, Metal & Minerals, Microchip, Mining, Nuclear, OEM, Petrochemical, Pharmaceutical, Power Generation, Pulp & Paper, Recycling, Textile, Transportation, Water Treatment, Wind Tunnels

COMMON ACCESSORIES

Access Door, Drain, Flanged Inlet/Outlet, Companion Flanges, Inlet/Outlet Screens, Belt Guard, Weather Cover, Shaft Seal, Shaft Cooler, Lube Lines, Piezometer Ring, Inlet Box, Two Groove Drive Minimum, Inlet & Outlet Dampers, External or Nested Inlet Vanes, Vibration Isolators, Disconnect Switches, Special Coatings

OPTIONAL CONSTRUCTION

High Temperature, Special Materials, Spark Resistant, UL 705, UL 762, UL Smoke & Heat

CERTIFICATIONS

AMCA Sound/Air and FEG, UL 705 Listed for Electrical, UL 762 Listed for Grease Laden Air, UL Listed for Smoke Control Systems

BCV

FLAT-BLADED BACKWARD INCLINED UTILITY SETS, BELT DRIVEN

- > 10.5 to 60 inches (270 mm to 1,525 mm) wheel diameters
- > Airflow to 78,660 CFM (133,600 m³/hour)
- > Static pressure to 8 inches w.g. (1,990 Pa)
- > AMCA licensed for Sound, Air and Fan Efficiency Grade
- > **Typical Applications:** Data Center Exhaust, General HVAC, Elevator Shaft Exhaust/Pressurization, Restroom Exhaust, Stairwell Pressurization, Industrial Ovens, Vehicle Exhaust, Generator Room Ventilation, Swimming Pool Exhaust



Available For Quickship



CATALOG 600

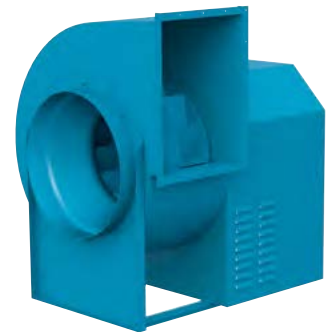
BCVR

FLAT-BLADED BACKWARD INCLINED UTILITY SETS
UL 762 LISTED FOR THE EXHAUST OF GREASE LADEN AIR

- > 10.5 to 36.5 inches (270 mm to 930 mm) wheel diameters
- > Airflow to 29,100 CFM (49,400 m³/hour)
- > Static pressure to 8 inches w.g. (1,990 Pa)
- > AMCA licensed for Sound, Air and Fan Efficiency Grade
- > UL 762 listed for Grease Laden Air
- > **Typical Applications:** Kitchen Exhaust, Dishwasher Exhaust



Available For Quickship



CATALOG 600

BCVSH

FLAT-BLADED BACKWARD INCLINED UTILITY SETS
UL LISTED FOR SMOKE CONTROL SYSTEMS

- > 12.25 to 60 inches (315 mm to 1,525 mm) wheel diameters
- > Airflow to 78,660 CFM (133,600 m³/hour)
- > Static pressure to 8 inches w.g. (1,990 Pa)
- > AMCA licensed for Sound, Air and Fan Efficiency Grade
- > UL listed for Smoke Control Systems
- > **Typical Applications:** Elevator Shaft Exhaust/Pressurization, Emergency Smoke Exhaust, Stairwell Pressurization



Available For Quickship



CATALOG 600

DCV

FLAT-BLADED BACKWARD INCLINED UTILITY SETS, DIRECT DRIVE

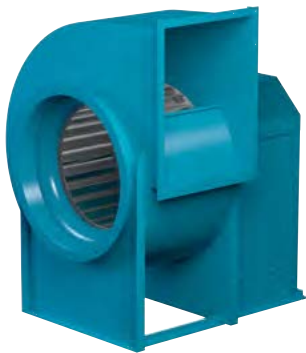
- > 10.5 to 20 inches (270 mm to 510 mm) wheel diameters
- > Airflow to 8,200 CFM (13,900 m³/hour)
- > Static pressure to 2.5 inches w.g. (600 Pa)
- > AMCA licensed for Sound, Air and Fan Efficiency Grade
- > **Typical Applications:** Data Center Exhaust, General HVAC, Elevator Shaft Exhaust/Pressurization, Restroom Exhaust, Stairwell Pressurization, Industrial Ovens, Vehicle Exhaust, Generator Room Ventilation, Swimming Pool Exhaust



Available For Quickship



CATALOG 600



Available For
Quickship

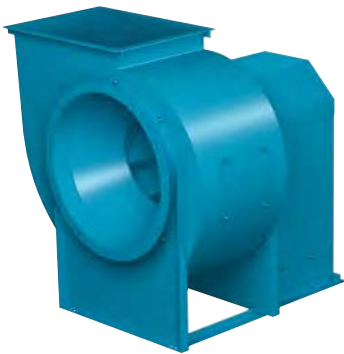


CATALOG 600

FCV

FORWARD CURVED UTILITY SETS

- > 7.5 to 36.5 inches (195 mm to 930 mm) wheel diameters
- > Airflow to 29,100 CFM (49,400 m³/hour)
- > Static pressure to 5 inches w.g. (1,240 Pa)
- > AMCA licensed for Air and Fan Efficiency Grade
- > **Typical Applications:** Data Center Exhaust, Elevator Shaft Exhaust/Pressurization, General HVAC, Restroom Exhaust, Generator Room Ventilation, Stairwell Pressurization, Swimming Pool Exhaust



Available For
Quickship

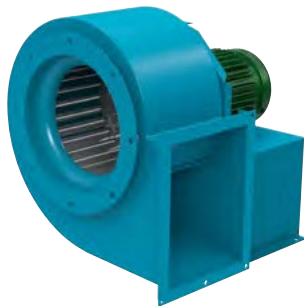


CATALOG 600

BAV

AIRFOIL UTILITY SET

- > 12.25 to 36.5 inches (315 mm to 930 mm) wheel diameters
- > Airflow to 32,100 CFM (54,500 m³/hour)
- > Static pressure to 8 inches w.g. (1,990 Pa)
- > AMCA licensed for Sound, Air and Fan Efficiency Grade
- > **Typical Applications:** Data Center Exhaust, General HVAC, Elevator Shaft Exhaust/Pressurization, Swimming Pool Exhaust, Restroom Exhaust, Generator Room Ventilation, Stairwell Pressurization



Available For
Quickship

CATALOG 600

DDF

FORWARD CURVED JUNIOR UTILITY SETS, DIRECT DRIVE

- > 6 to 10.5 inches (155 mm to 270 mm) wheel diameters
- > Airflow to 2,100 CFM (3,600 m³/hour)
- > Static pressure to 1.75 inches w.g. (440 Pa)
- > **Typical Applications:** Data Center Exhaust, General HVAC, Elevator Shaft Exhaust/Pressurization, Restroom Exhaust, Generator Room Ventilation, Stairwell Pressurization, Swimming Pool Exhaust

Fan & Blower
Twin City

SALES CONTACT



www.airmax-hvac.com



080-614-4944, 063-268-8080



@airmax (Line Official)



windcontrol.info@gmail.com



Address

เลขที่ 56/392 หมู่ที่ 12
ตำบลศรีชะอรเข้้น้อย
อำเภอบางเสาธง
จังหวัดสมุทรปราการ
10540

