

AXIAL FANS

OVERVIEW



Model TCTS
Vapor Dispersion



Model TCVX - Vertical Roof Mount
Exhaust



Model TCVA
Hospital Exhaust



Model TCVA
Paint Booth Exhaust

AXIAL FANS

Tubeaxial Fans are designed to handle a wide range of requirements, from general ventilation to process air supply. The mounting flexibility makes it an ideal choice for many industrial and commercial applications. Units are available as direct or belt driven, with steel or aluminum wheels that are fixed or adjustable blade pitch.

Vaneaxial Fans are designed for applications where large volumes of air are required at moderate to high pressures. Direct and belt driven models, with fixed and adjustable blade wheels, are available. The tubular design and high wheel efficiency provides maximum performance while using minimal space.

PROPELLER TYPES

Fixed Pitch Fabricated Steel and Cast Aluminum, Adjustable Pitch Cast Aluminum

TYPICAL INDUSTRIES

Aerospace, Agriculture, Air Pollution Control, Automotive, Boilers, Brick, Car Wash, Chemical, Clean Rooms, Composting, Ethanol, Food & Beverage, Foundry, General Manufacturing, Glass, Green/LEED, HVAC, Industrial Processes, Institutional & Hospitality, Marine, Metal & Minerals, Microchip, Mining, Nuclear, OEM, Petrochemical, Pharmaceutical, Power Generation, Pulp & Paper, Recycling, Textile, Transportation, Water Treatment, Wind Tunnels

COMMON ACCESSORIES

Access Doors, Inlet/Outlet Screens and Guards, Inlet/Outlet Companion Flanges, Belt Guards, Motor Covers, Weather Covers, Inlet Bells, Inlet/Outlet Cones, Special Coatings and Disconnect Switches

OPTIONAL CONSTRUCTION

Spark Resistant Construction (Type A, B and C), High Temperature Construction, Reverse Flow Configuration, High Moisture Modification, Swingout and Clamshell Construction

CERTIFICATIONS

AMCA Sound/Air and FEG, UL 705 Listed for Electrical, UL Listed for Smoke Control Systems

TD

TUBEAXIAL FAN, DIRECT DRIVE

- > 14 to 48 inches (355 mm to 1,220 mm) wheel diameters
- > Airflow to 42,900 CFM (72,900 m³/hour)
- > Static pressure to 1.5 inches w.g. (370 Pa)
- > AMCA licensed for Sound, Air and Fan Efficiency Grade
- > UL 705 listed
- > **Typical Applications:** Data Center Exhaust, General HVAC, Parking Garage Ventilation



CATALOG 4830

TB

TUBEAXIAL FAN, BELT DRIVEN

- > 14 to 60 inches (355 mm to 1,525 mm) wheel diameters
- > Airflow to 82,600 CFM (140,300 m³/hour)
- > Static pressure to 1.5 inches w.g. (370 Pa)
- > AMCA licensed for Sound, Air and Fan Efficiency Grade
- > UL 705 listed
- > **Typical Applications:** Data Center Exhaust, General HVAC, General Rooftop Exhaust, Parking Garage Ventilation



CATALOG 4830

TBSH

TUBEAXIAL FAN, BELT DRIVEN

UL LISTED FOR SMOKE CONTROL SYSTEMS

- > 24 to 60 inches (610 mm to 1,525 mm) wheel diameters
- > Airflow to 82,600 CFM (140,300 m³/hour)
- > Static pressure to 1.25 inches w.g. (310 Pa)
- > AMCA licensed for Sound, Air and Fan Efficiency Grade
- > UL listed for Smoke Control Systems
- > **Typical Applications:** Elevator Shaft Exhaust/Pressurization, Emergency Smoke Exhaust, Stairwell Pressurization



CATALOG 4830

ATAD

AXIPAL TUBEAXIAL FAN, DIRECT DRIVE

- > 13.65 to 48.78 inches (350 mm to 1,240 mm) wheel diameters
- > Airflow to 75,600 CFM (128,400 m³/hour)
- > Static pressure to 4.5 inches w.g. (1,120 Pa)
- > AMCA licensed for Sound, Air and Fan Efficiency Grade
- > **Typical Applications:** Air Pollution Control, Data Center Exhaust, General HVAC, General Rooftop Exhaust, Clean Room HEPA Filtration, Odor Control, Waste Water Treatment



CATALOG AX210



CATALOG AX210



ATAB

AXIAL TUBEAXIAL FAN, BELT DRIVEN

- > 15.61 to 48.78 inches (400 mm to 1,240 mm) wheel diameters
- > Airflow to 65,100 CFM (110,600 m³/hour)
- > Static pressure to 2.5 inches w.g. (620 Pa)
- > AMCA licensed for Sound, Air and Fan Efficiency Grade
- > **Typical Applications:** Air Pollution Control, Data Center Exhaust, General HVAC, General Rooftop Exhaust, Clean Room HEPA Filtration, Odor Control, Waste Water Treatment



CATALOG AX250



TCTS

TUBEAXIAL FAN, STEEL WHEEL

- > 12 to 54 inches (305 mm to 1,375 mm) wheel diameters
- > Airflow to 80,000 CFM (135,900 m³/hour)
- > Static pressure to 4 inches w.g. (990 Pa)
- > UL 705 listing available
- > **Typical Applications:** Air Pollution Control, Heat Transfer Equipment Testing, Odor Control, Waste Water Treatment



CATALOG AX250



TCTSSH

TUBEAXIAL FAN, STEEL WHEEL

UL LISTED FOR SMOKE CONTROL SYSTEMS

- > 12 to 54 inches (305 mm to 1,375 mm) wheel diameters
- > Airflow to 80,000 CFM (135,900 m³/hour)
- > Static pressure to 4 inches w.g. (990 Pa)
- > UL listed for Smoke Control Systems
- > **Typical Applications:** Elevator Shaft Exhaust/Pressurization, Emergency Smoke Exhaust, Stairwell Pressurization



CATALOG AX200



TCTA

TUBEAXIAL FAN, CAST ALUMINUM WHEEL

- > 12 to 60 inches (305 mm to 1,525 mm) wheel diameters
- > Airflow to 96,000 CFM (163,100 m³/hour)
- > Static pressure to 5 inches w.g. (1,240 Pa)
- > UL 705 listing available
- > **Typical Applications:** Air Pollution Control, General HVAC, Clean Room HEPA Filtration, Odor Control, Parking Garage Ventilation, Waste Water Treatment

TCVA

VANEAXIAL FAN, CAST ALUMINUM WHEEL

- > 12 to 60 inches (305 mm to 1,525 mm) wheel diameters
- > Airflow to 103,000 CFM (175,000 m³/hour)
- > Static pressure to 7 inches w.g. (1,740 Pa)
- > AMCA licensed for Air and Fan Efficiency Grade
- > UL 705 listing available
- > **Typical Applications:** Air Pollution Control, Odor Control, Clean Room HEPA Filtration, Parking Garage Ventilation, Waste Water Treatment



CATALOG AX100

TCVX

VANEAXIAL FAN, ADJUSTABLE PITCH BLADES

- > 18 to 84 inches (460 mm to 2,135 mm) wheel diameters
- > Airflow to 233,000 CFM (395,900 m³/hour)
- > Static pressure to 10 inches w.g. (2,490 Pa)
- > AMCA licensed for Sound, Air and Fan Efficiency Grade
- > UL 705 listing available
- > **Typical Applications:** Air Pollution Control, Odor Control, Clean Room HEPA Filtration, Parking Garage Ventilation, Waste Water Treatment



CATALOG AX300

TCVSSH

VANEAXIAL FAN, STEEL WHEEL

UL LISTED FOR SMOKE CONTROL SYSTEMS

- > 12 to 54 inches (305 mm to 1,375 mm) wheel diameters
- > Airflow to 80,000 CFM (135,900 m³/hour)
- > Static pressure to 4 inches w.g. (990 Pa)
- > UL listed for Smoke Control Systems
- > **Typical Applications:** Elevator Shaft Exhaust/Pressurization, Emergency Smoke Exhaust, Stairwell Pressurization



CATALOG AX250

TCVS

VANEAXIAL FAN, STEEL WHEEL

- > 12 to 54 inches (305 mm to 1,375 mm) wheel diameters
- > Airflow to 80,000 CFM (135,900 m³/hour)
- > Static pressure to 4 inches w.g. (990 Pa)
- > UL 705 listing available
- > **Typical Applications:** Air Pollution Control, Heat Transfer Equipment Testing, Odor Control, Waste Water Treatment



CATALOG AX250



 CATALOG AX351

FPAC

VANEAXIAL FAN, PNEUMATICALLY CONTROLLABLE PITCH-IN-MOTION

- > 32 to 79 inches (815 mm to 2,010 mm) wheel diameters
- > Airflow to 250,000 CFM (424,800 m³/hour)
- > Static pressure to 12 inches w.g. (2,980 Pa)
- > **Typical Applications:** Air Pollution Control, Clean Room HEPA Filtration, Parking Garage Ventilation



 CATALOG AX351

FPDA

VANEAXIAL FAN, MANUALLY ADJUSTABLE PITCH-AT-REST

- > 32 to 79 inches (815 mm to 2,010 mm) wheel diameters
- > Airflow to 250,000 CFM (424,800 m³/hour)
- > Static pressure to 12 inches w.g. (2,980 Pa)
- > **Typical Applications:** Air Pollution Control, Clean Room HEPA Filtration, Parking Garage Ventilation



 CATALOG AX220

TCBS

PAINT BOOTH EXHAUST TUBEAXIAL FAN, BELT DRIVEN

- > 12 to 42 inches (305 mm to 1,070 mm) wheel diameters
- > Airflow to 36,100 CFM (61,300 m³/hour)
- > Static pressure to 1.25 inches w.g. (310 Pa)
- > **Typical Applications:** Spray Booth Exhaust



 CATALOG 430

TAMF

FIBERGLASS TYPE FG7 TUBEAXIAL FAN, BELT DRIVEN

- > 14 to 60 inches (355 mm to 1,525 mm) wheel diameters
- > Airflow to 51,900 CFM (88,200 m³/hour)
- > Static pressure to 1.5 inches w.g. (370 Pa)
- > **Typical Applications:** Chemical/Corrosive Environments, Exhaust Applications, Water Treatment, Air Pollution Control, Process Air, High Moisture Environments

TAHF

FIBERGLASS TYPE TF TUBEAXIAL FAN, BELT DRIVEN

- > 12 to 60 inches (305 mm to 1,525 mm) wheel diameters
- > Airflow to 83,200 CFM (141,400 m³/hour)
- > Static pressure to 2.5 inches w.g. (620 Pa)
- > **Typical Applications:** Chemical/Corrosive Environments, Exhaust Applications, Water Treatment, Air Pollution Control, Process Air, High Moisture Environments

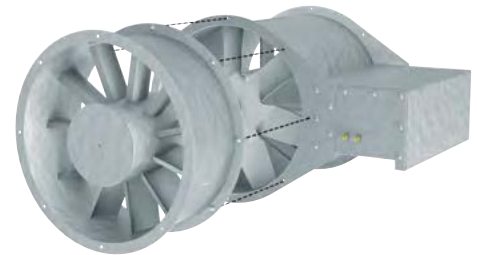


 CATALOG 430

VAHF

FIBERGLASS TYPE TF VANEAXIAL FAN, BELT DRIVEN

- > 12 to 60 inches (305 mm to 1,525 mm) wheel diameters
- > Airflow to 81,200 CFM (138,000 m³/hour)
- > Static pressure to 4 inches w.g. (990 Pa)
- > **Typical Applications:** Chemical/Corrosive Environments, Exhaust Applications, Water Treatment, Air Pollution Control, Process Air, High Moisture Environments



 CATALOG 430

Fan & Blower
Twin City

SALES CONTACT



www.airmax-hvac.com



080-614-4944, 063-268-8080



@airmax (Line Official)



windcontrol.info@gmail.com



Address

เลขที่ 56/392 หมู่ที่ 12
ตำบลศรีชะอรเข้้น้อย
อำเภอบางเสาธง
จังหวัดสมุทรปราการ
10540

